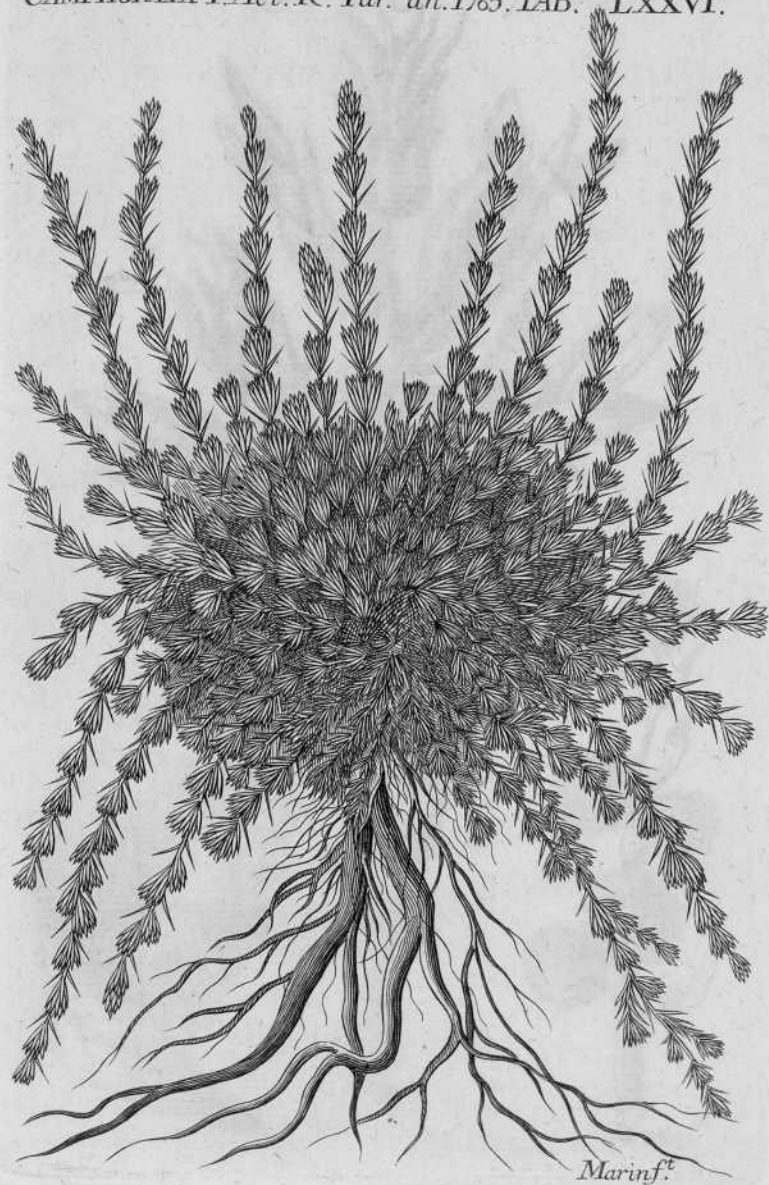
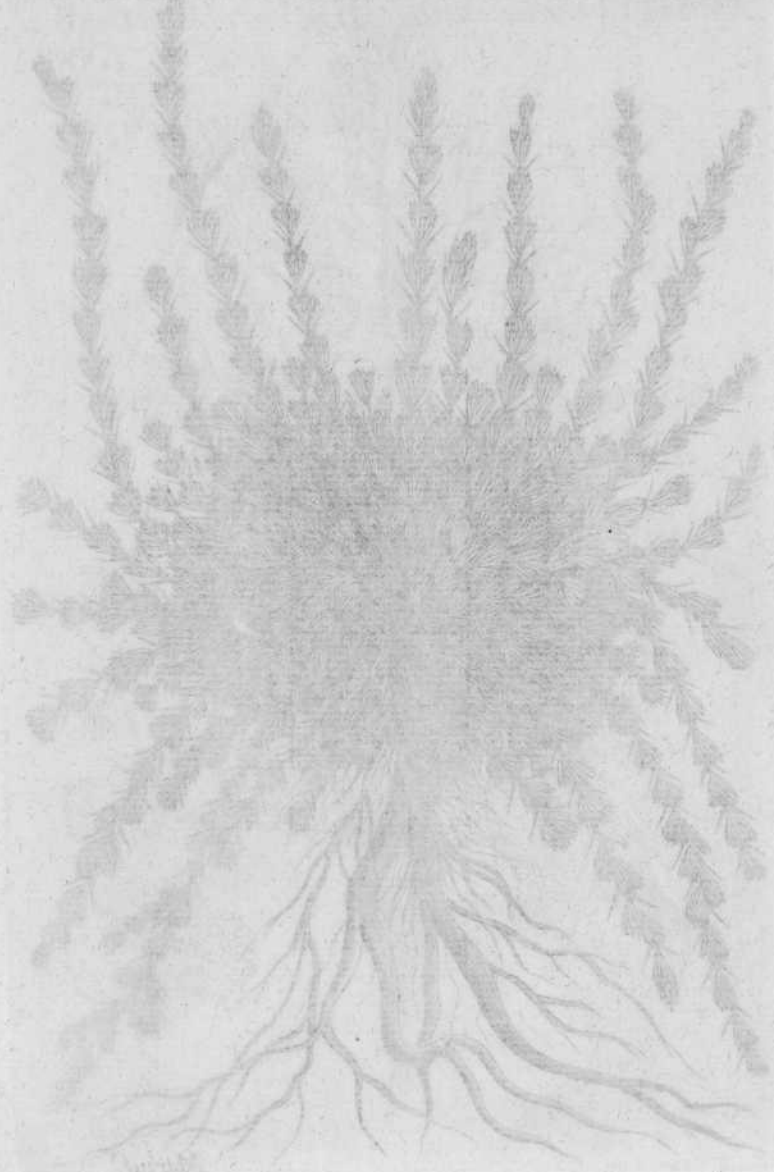


CAMPHORATA T. Act. R. Par. an. 1765. TAB. LXXVI.



Marinf<sup>t</sup>

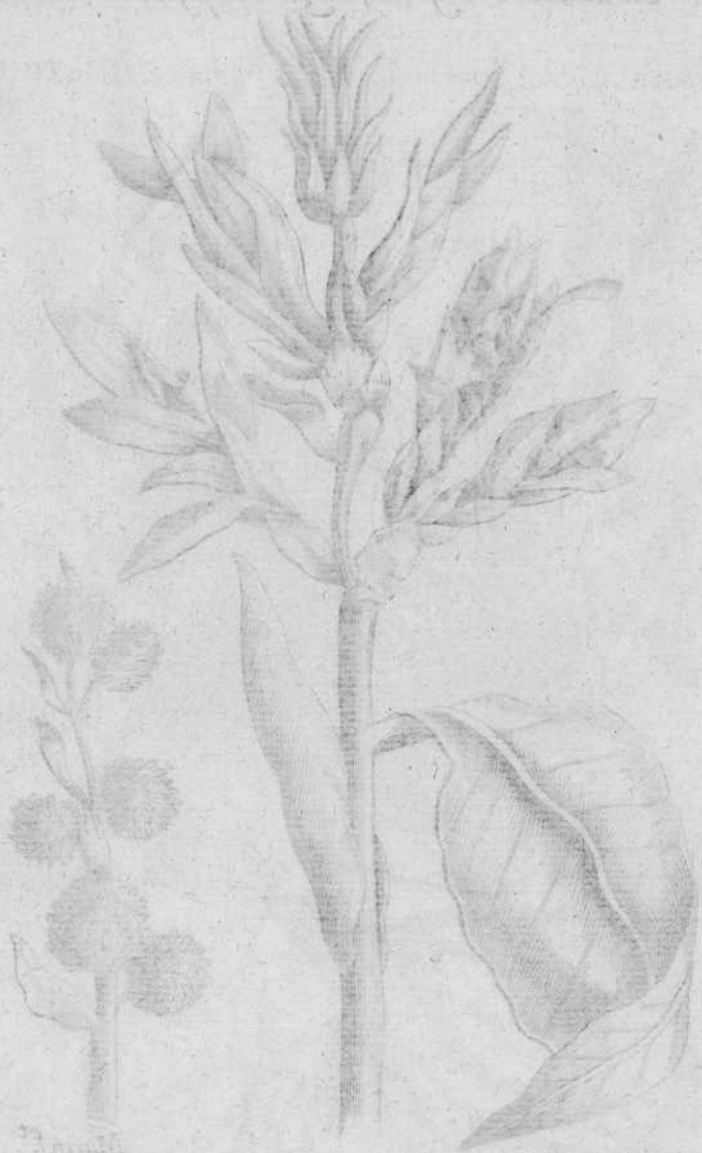
L. PAPHIUM T. P. R. FOR AN. 1750. LXXXV.



*CANNACORUS latifolius, vulgaris.* T. frst. TAB. LXXVII.

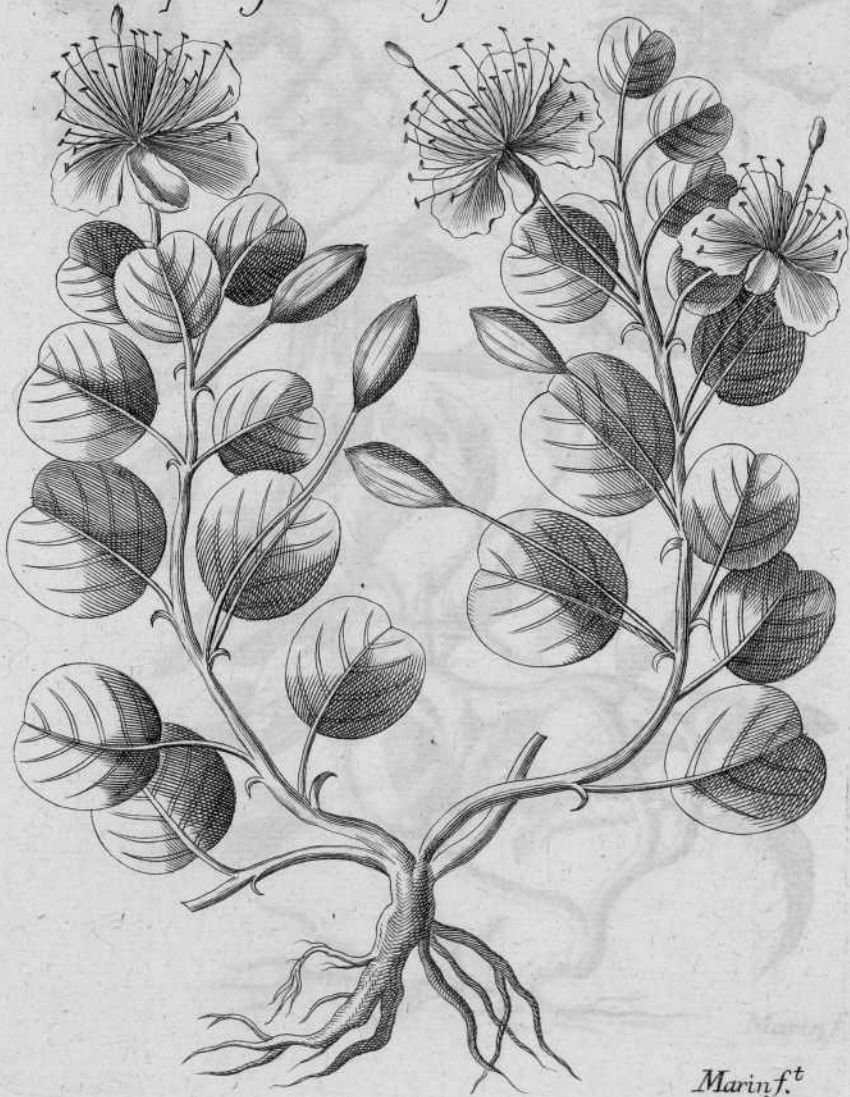


CANTHARIS vulgaris L. Sp. Pl. 1037. t. 1037.



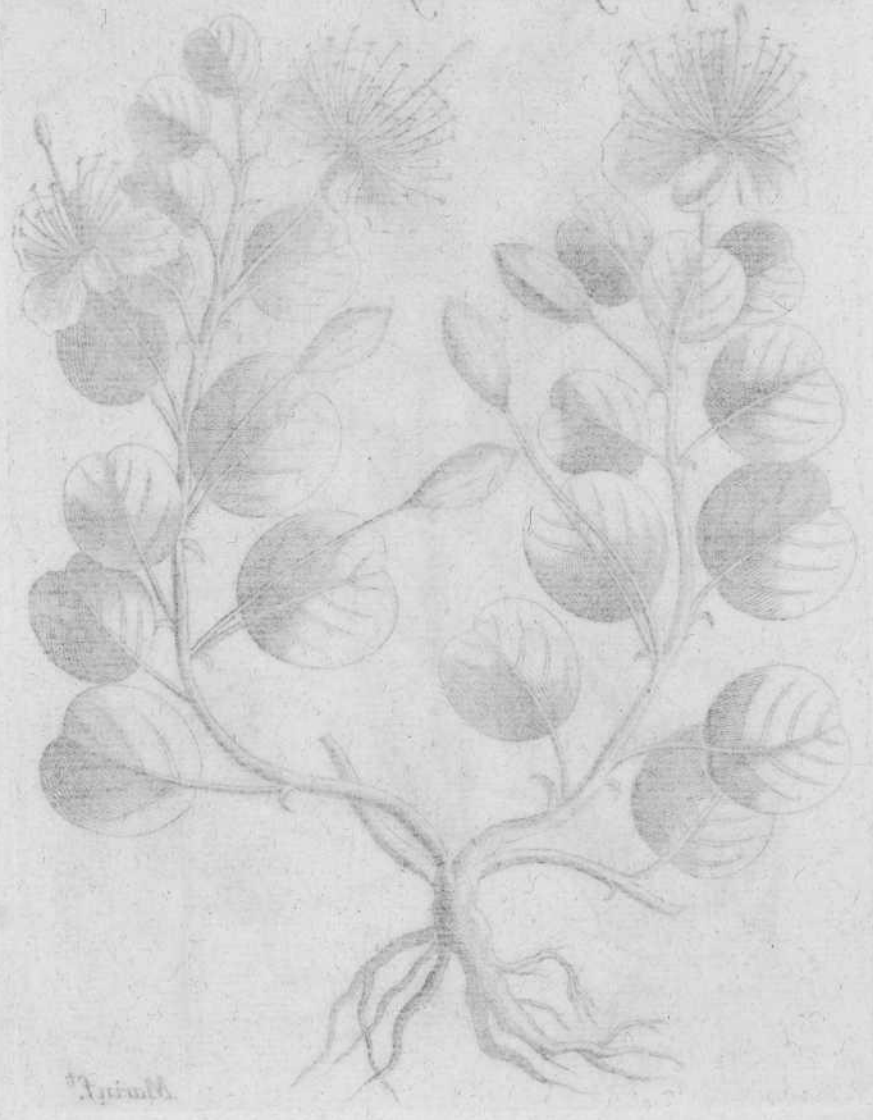
1037.

*CAPPARIS Spinosa fructu minore, folio rotundo. C. B. Pin. TAB. LXXXVIII.*



*Marin. f. t*

ALBIS. Juncus fructu munito folio munito. C. B. P. TAB. 122. III.



Alnus

*CAPRIEOLIUM Germanicum. Dod. Pempt. TAB. LXXXIX.*



Marin<sup>t</sup>

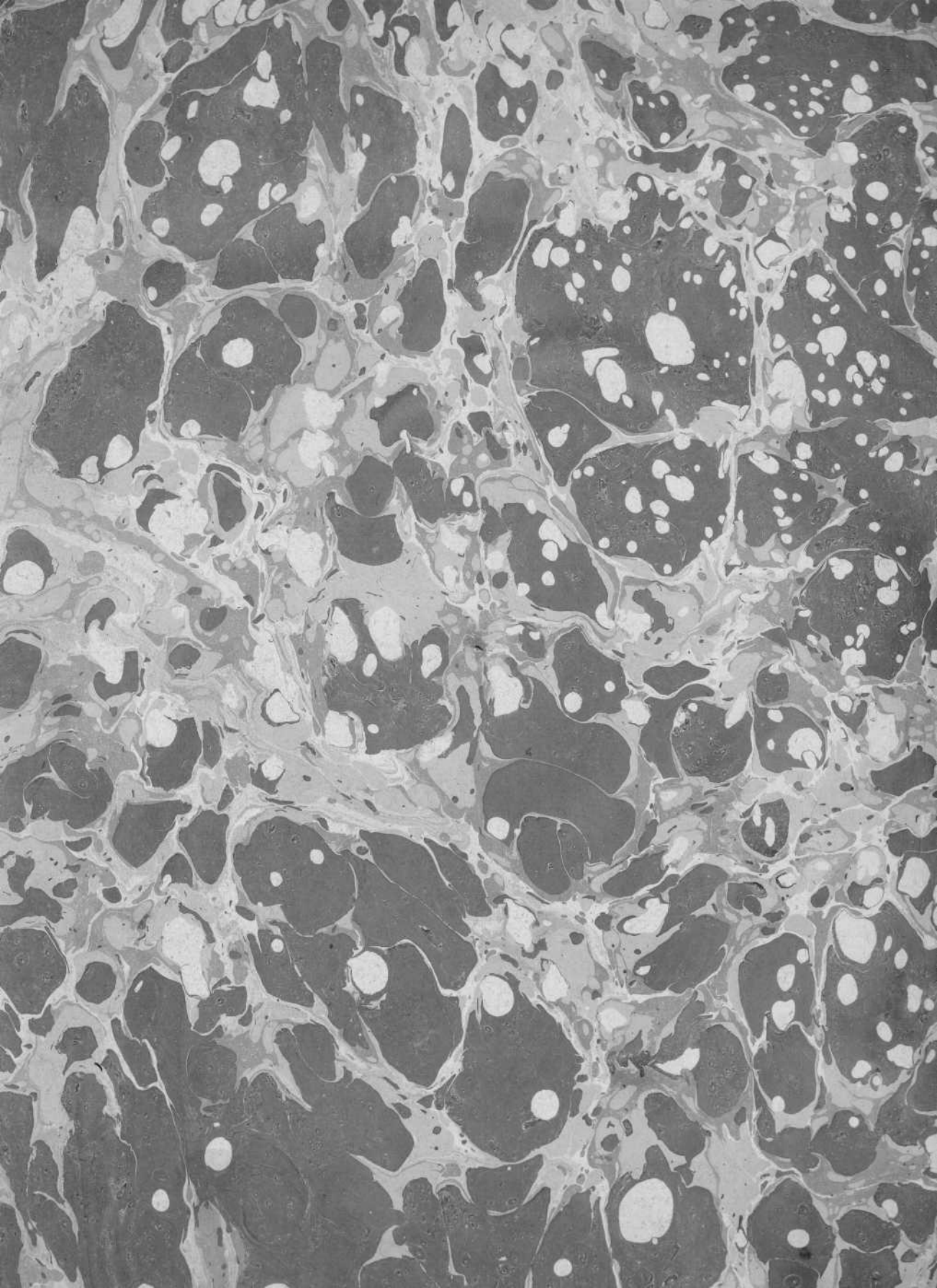


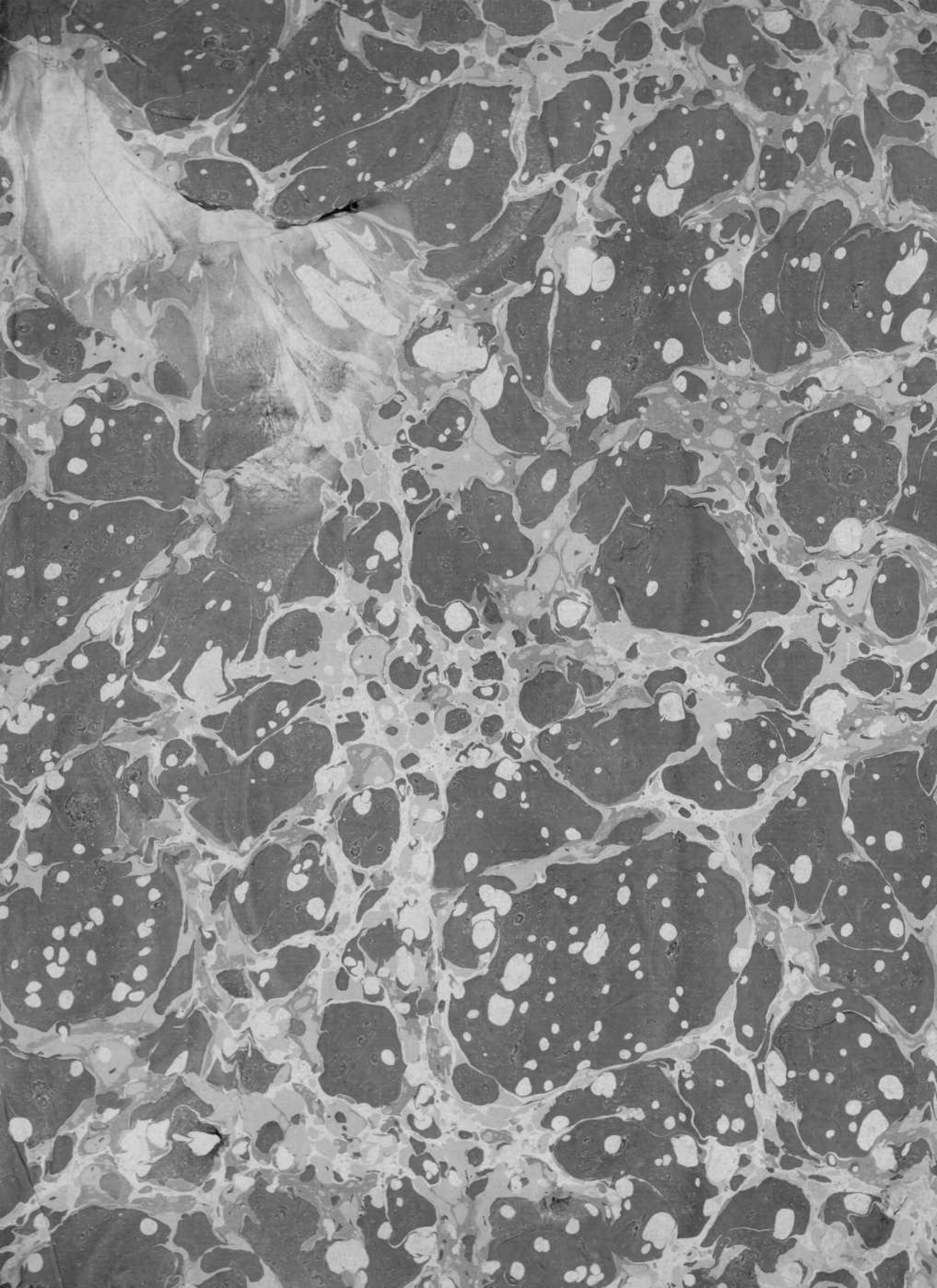
APPRELIUM Germanicum. Dod. Pempt. TAB. LXXXV.

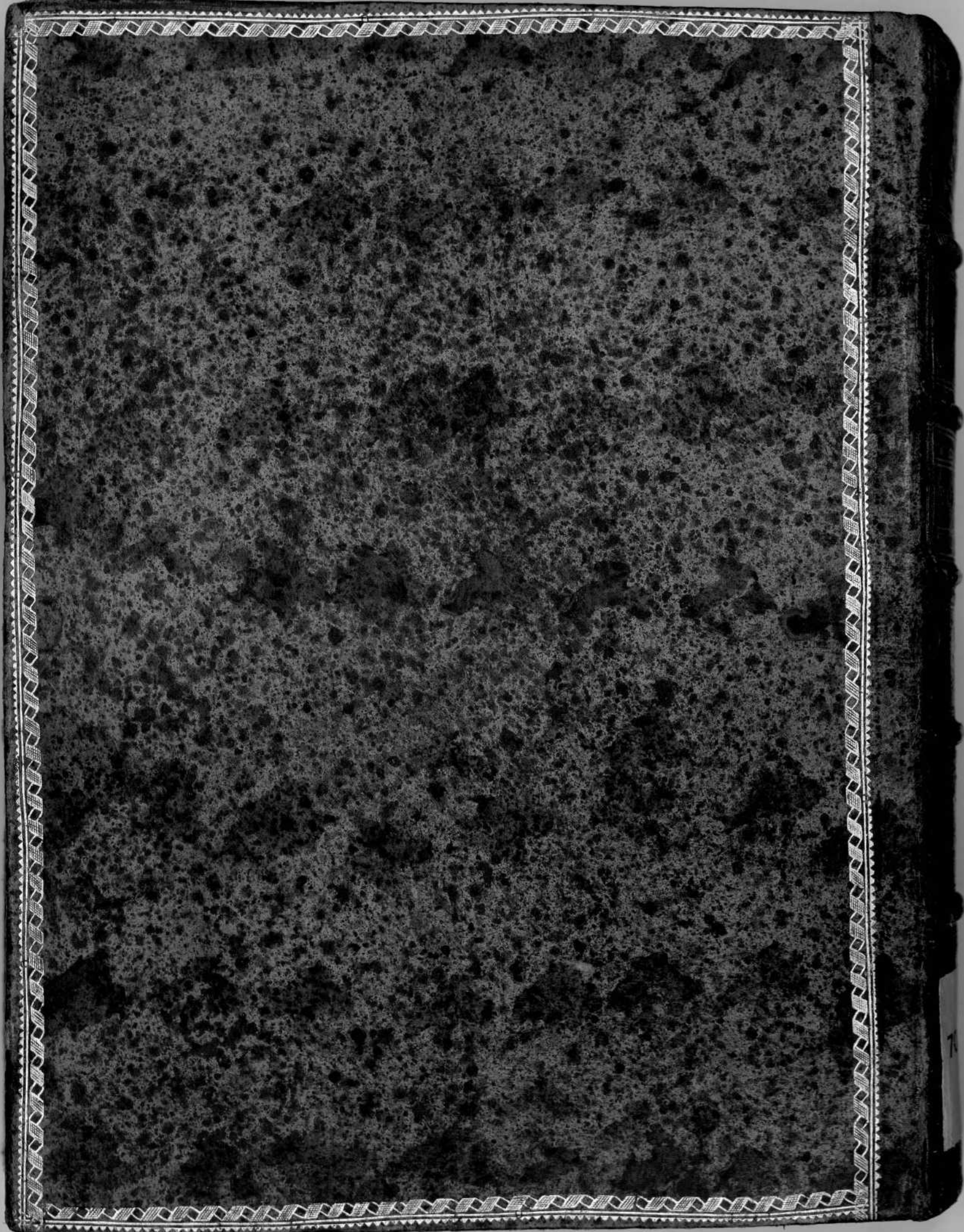














QUER  
FLORA  
ESPANO



TO. III



70632