

e.97

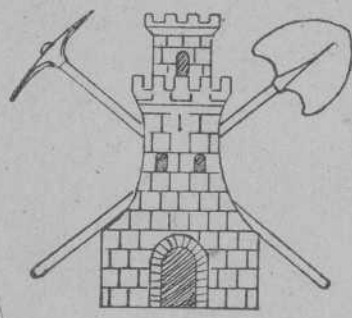
10
18856

38
12154-10

C. C. A.

Grupo Ufficiali Istruttori del Genio
Burgos

Aparatos de auscultación subterranea



BU
4686
(20)

1938
II Año Triunfal.

BPE Burgos



3439335 BU 4686 (20)

1139335

BU 4686 (20)

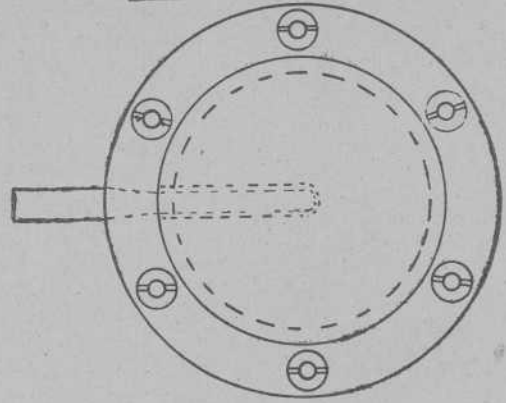
7/6

C. 93

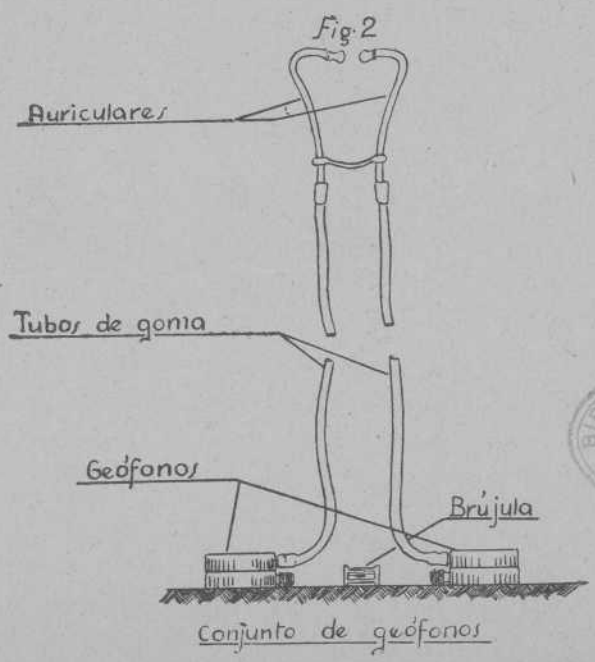
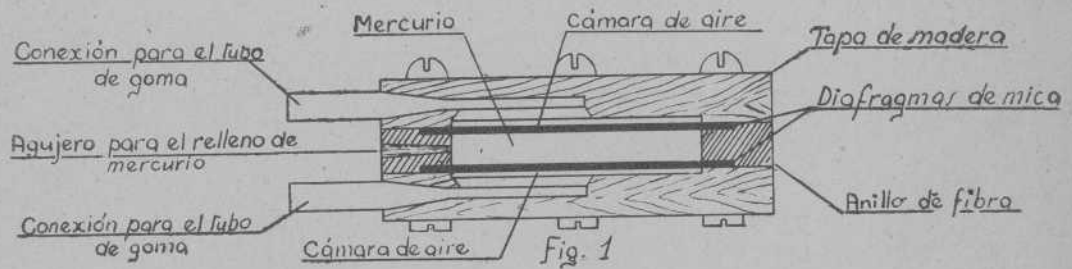
e

Tabla. I°

Geófono de mercurio



B.P. BURGOS
N.R. 127570
N.T. 101736
C.B. 1139335
BU
4886(20)



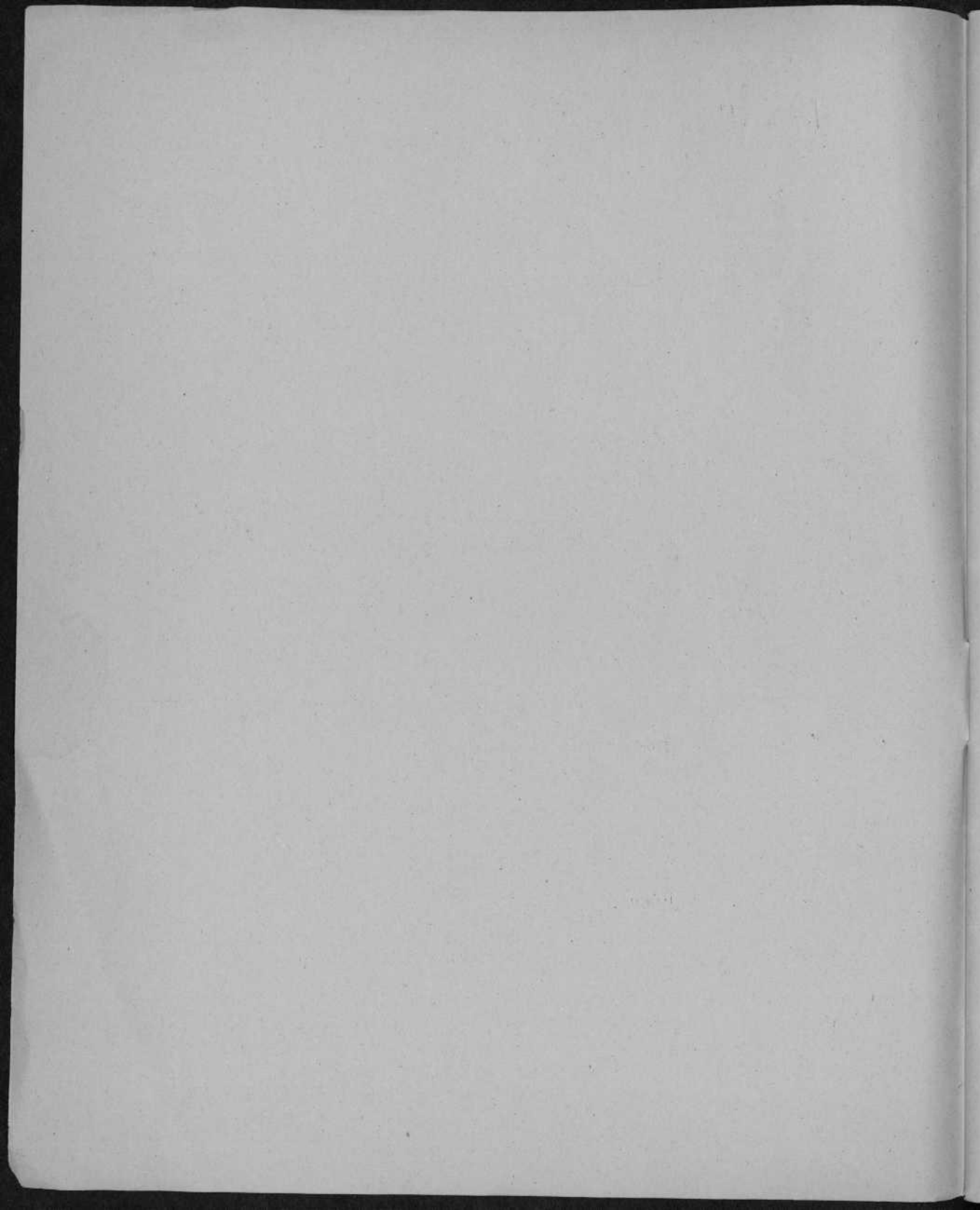
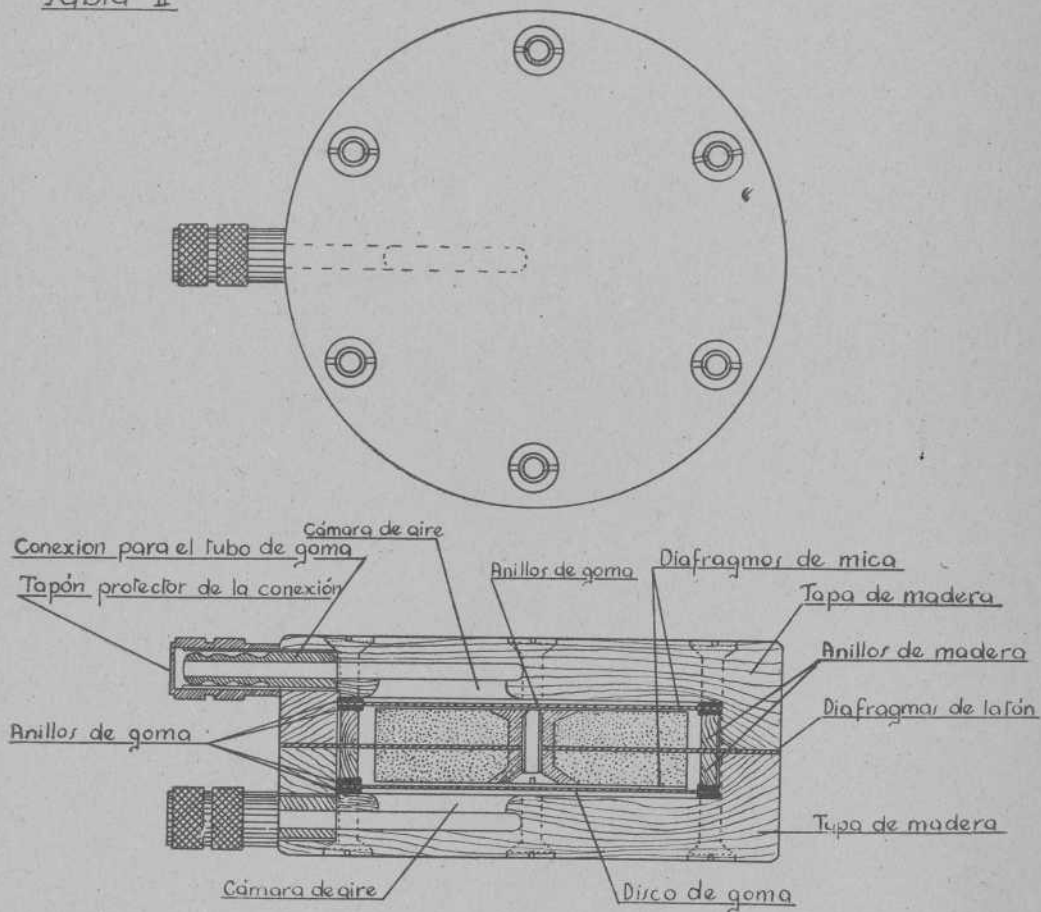


Tabla II



Geófono de masa de plomo

Fig. III

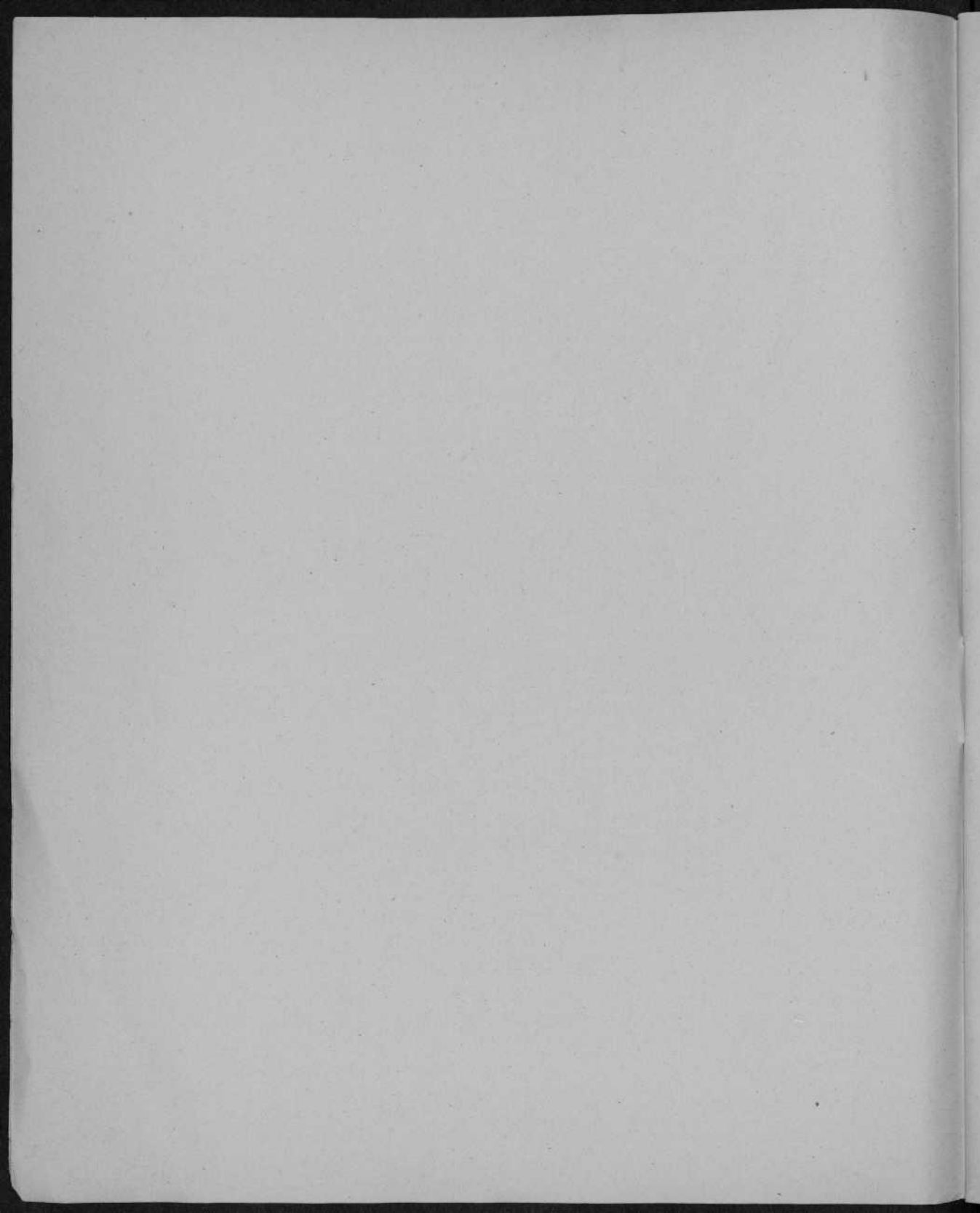


Tabla. III

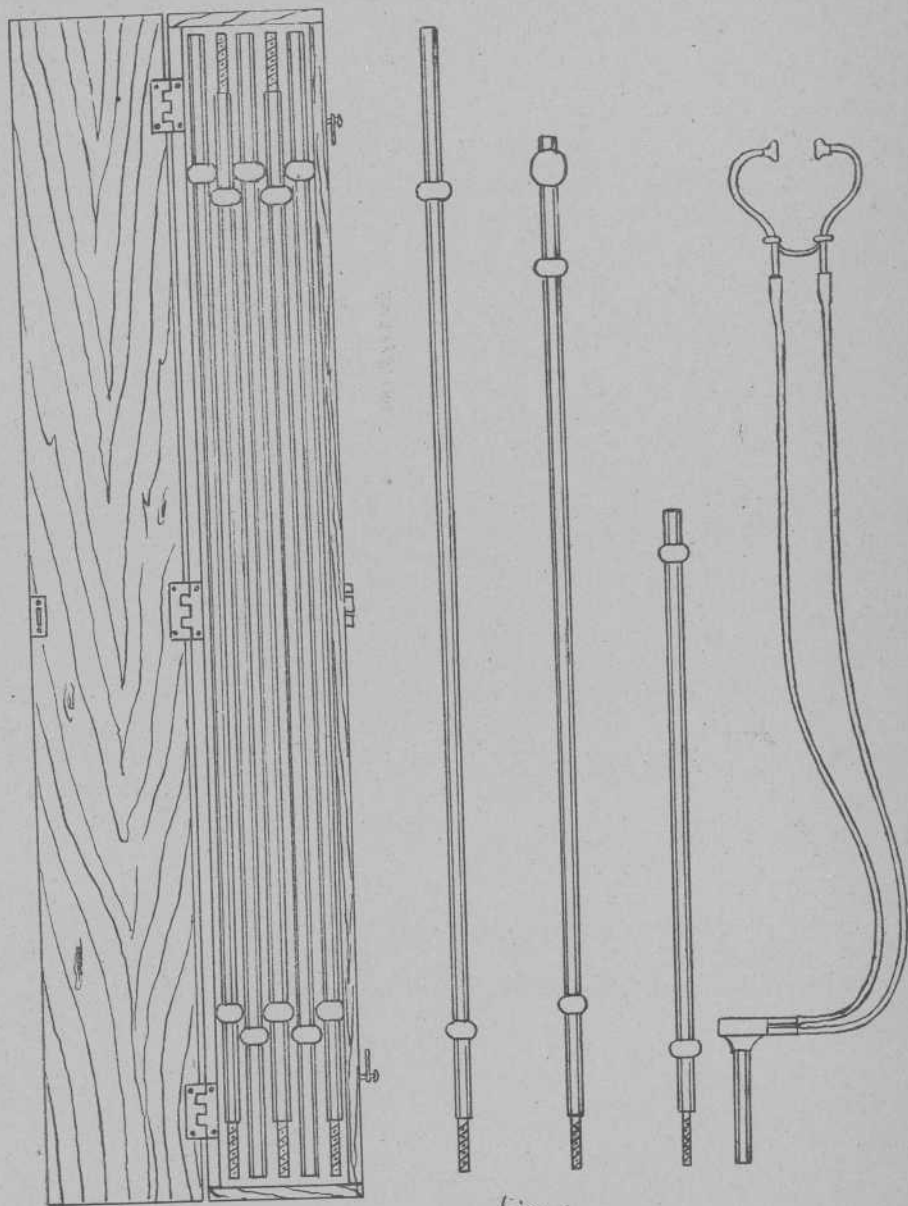
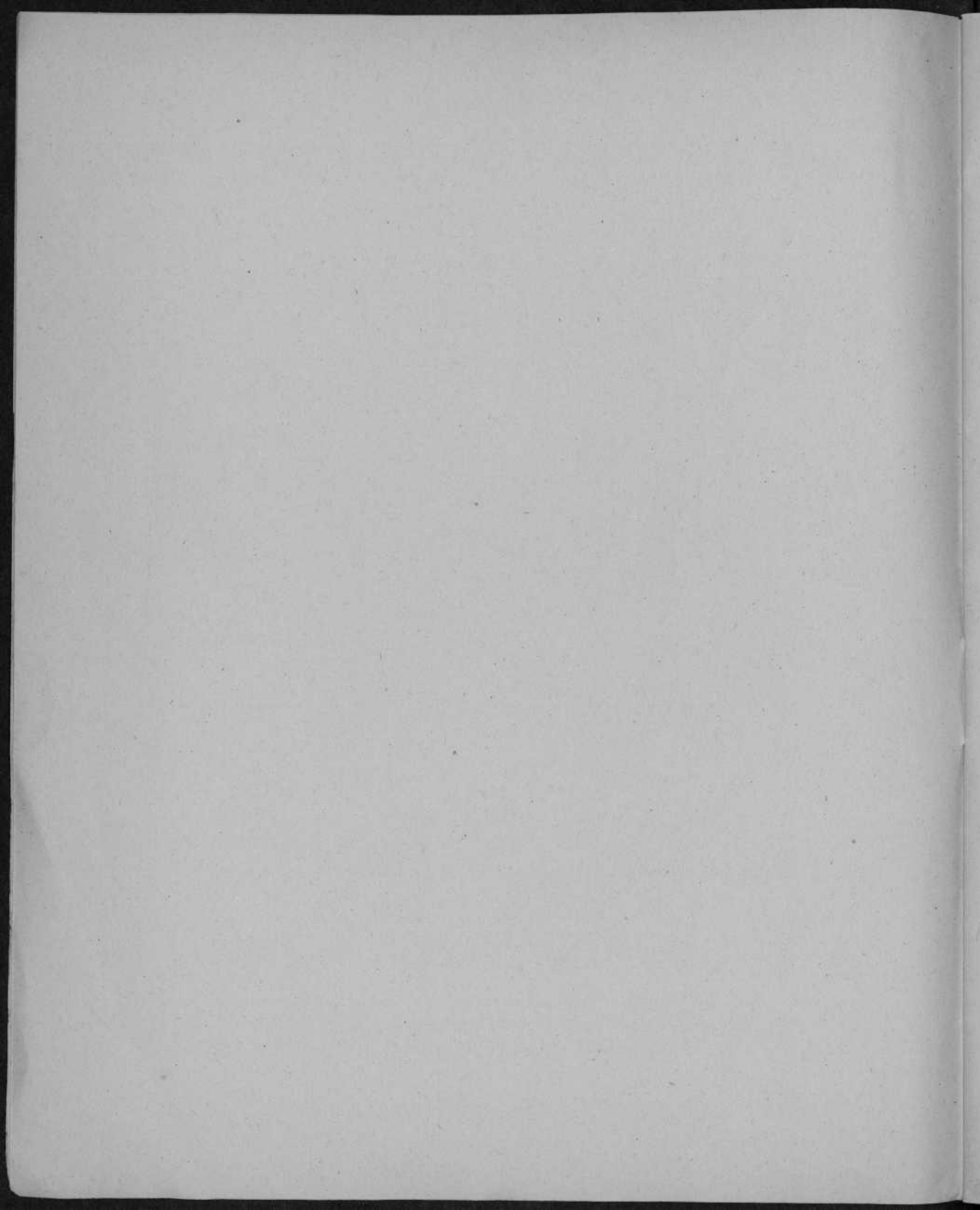
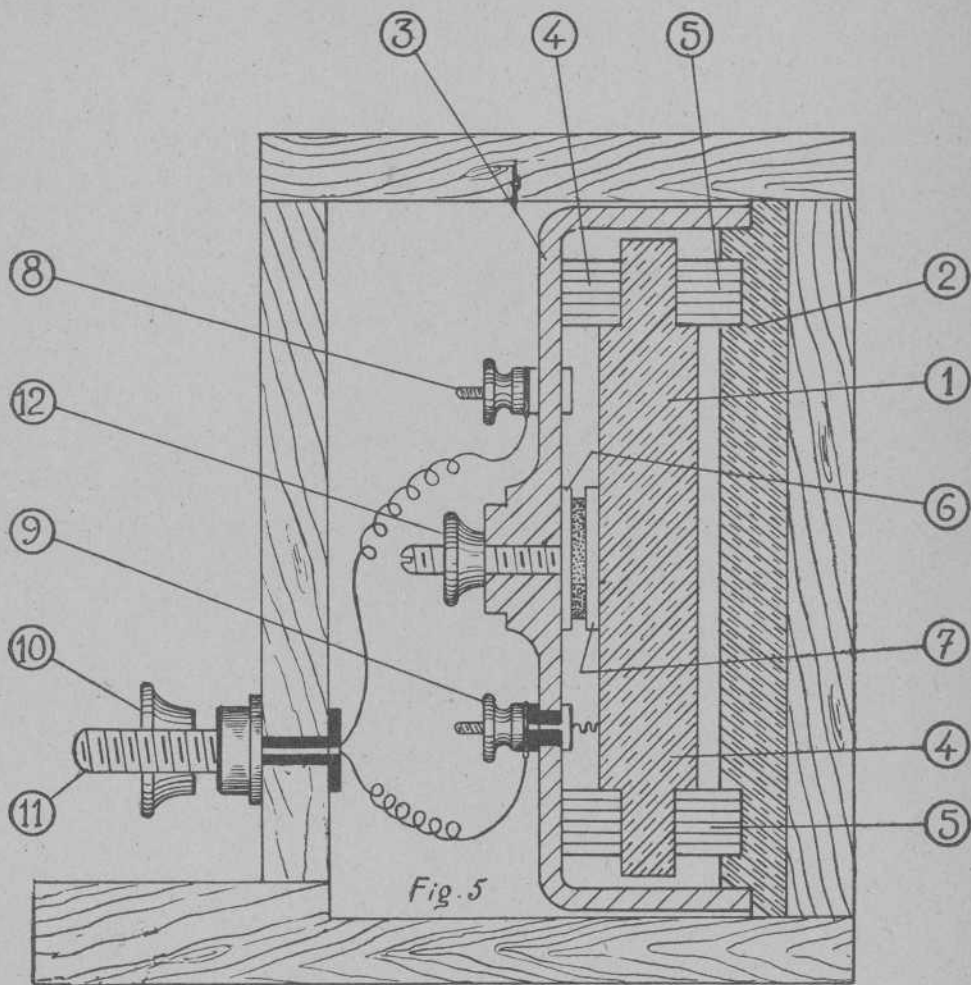


Fig. 4

Antenas de escucha - Telegeófono.





- | | | | |
|---|--------------------|----|----------|
| 1 | Misa de plomo | 8 | } Borner |
| 2 | Base de latón | 9 | |
| 3 | Tapa | 10 | } Borner |
| 4 | } Anillos de goma | 11 | |
| 5 | | 7 | 12 |
| 6 | } Discos de carbon | | |
| 7 | | | |

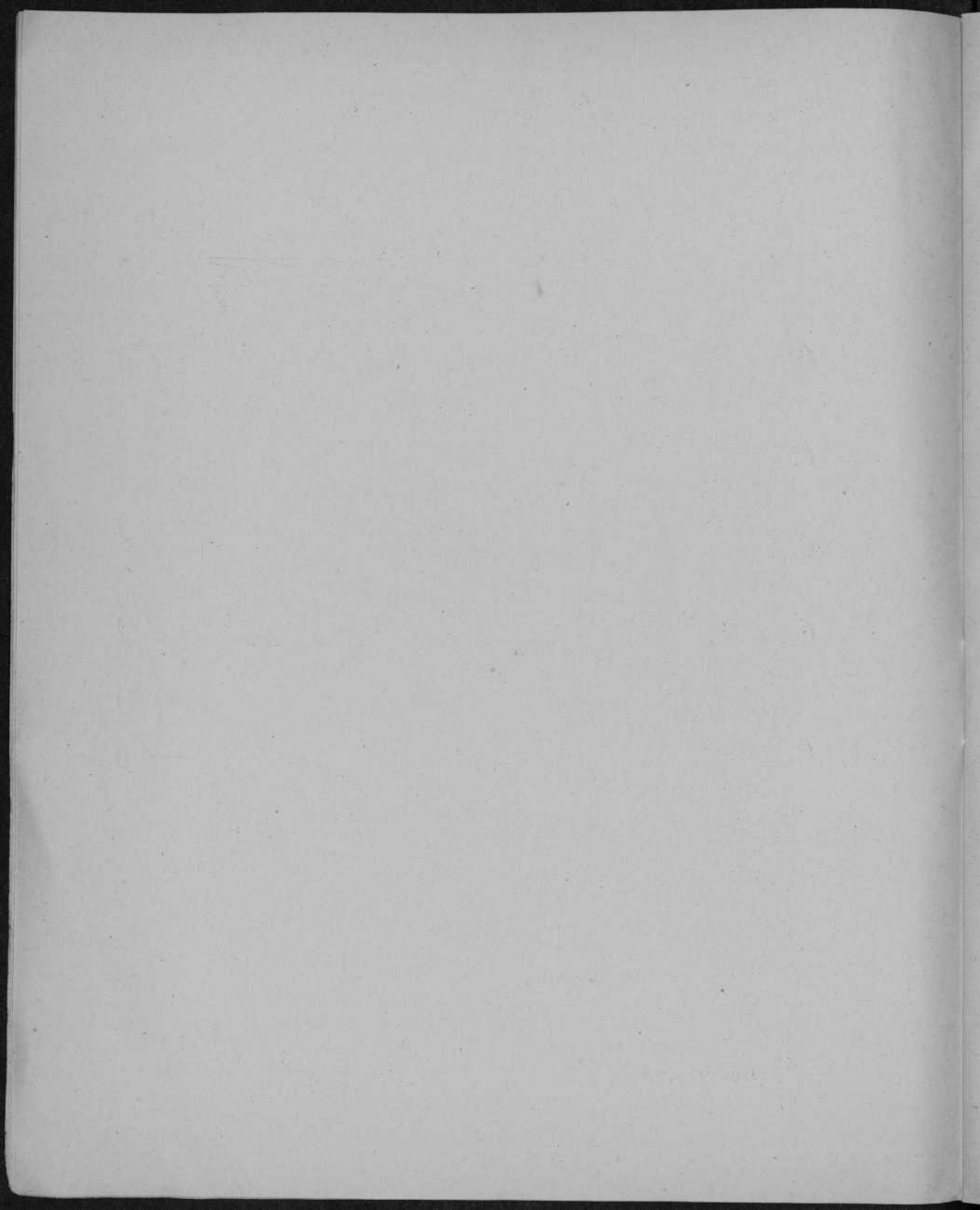
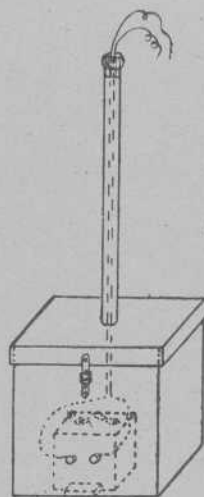
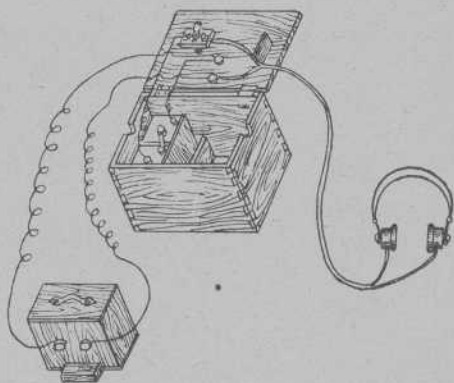
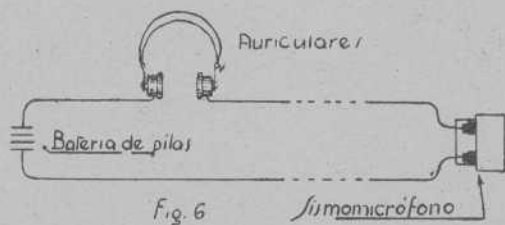


Tabla V

Circuito eléctrico del sismomicrofono



Estuche de protección para el sismomicrofono

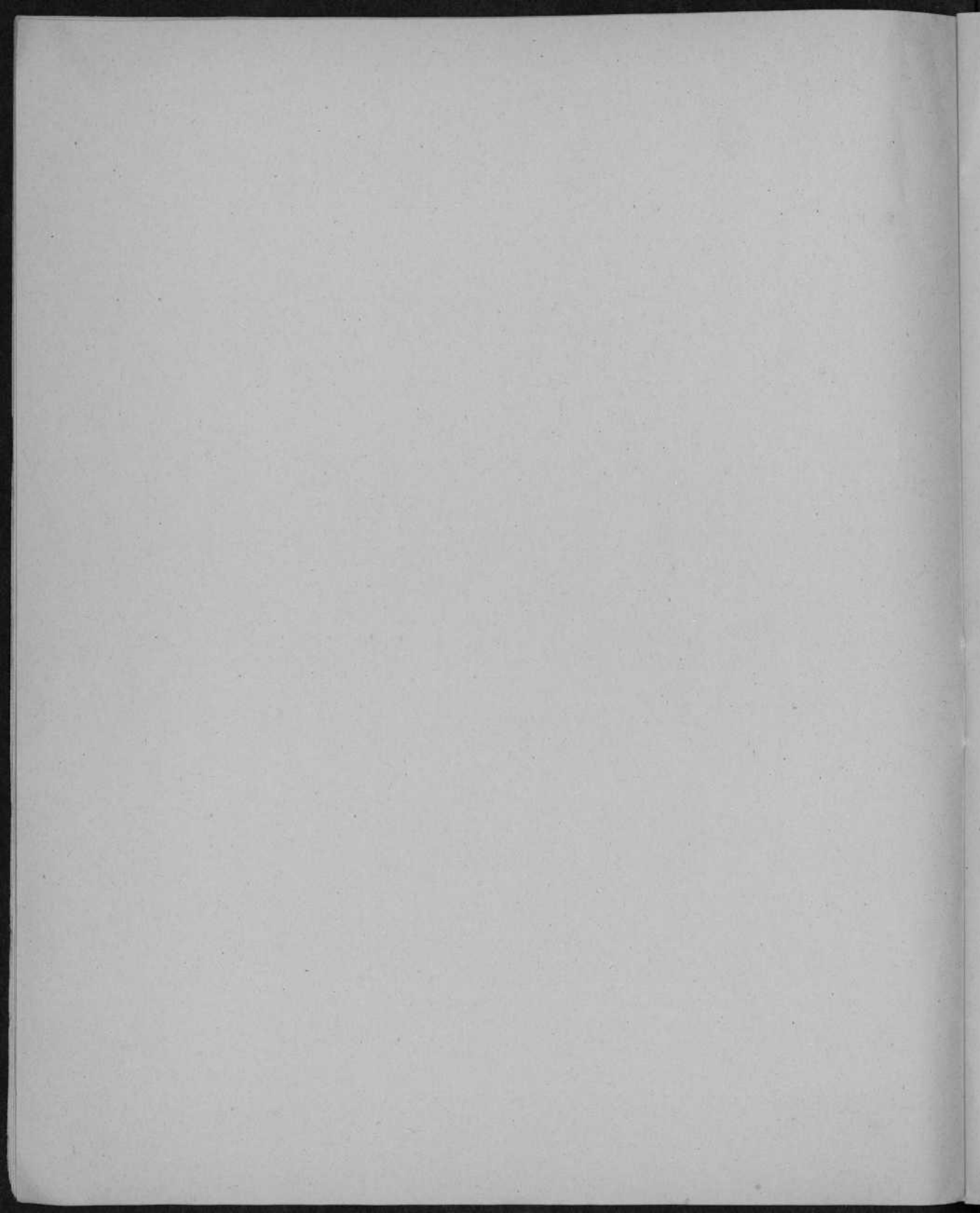
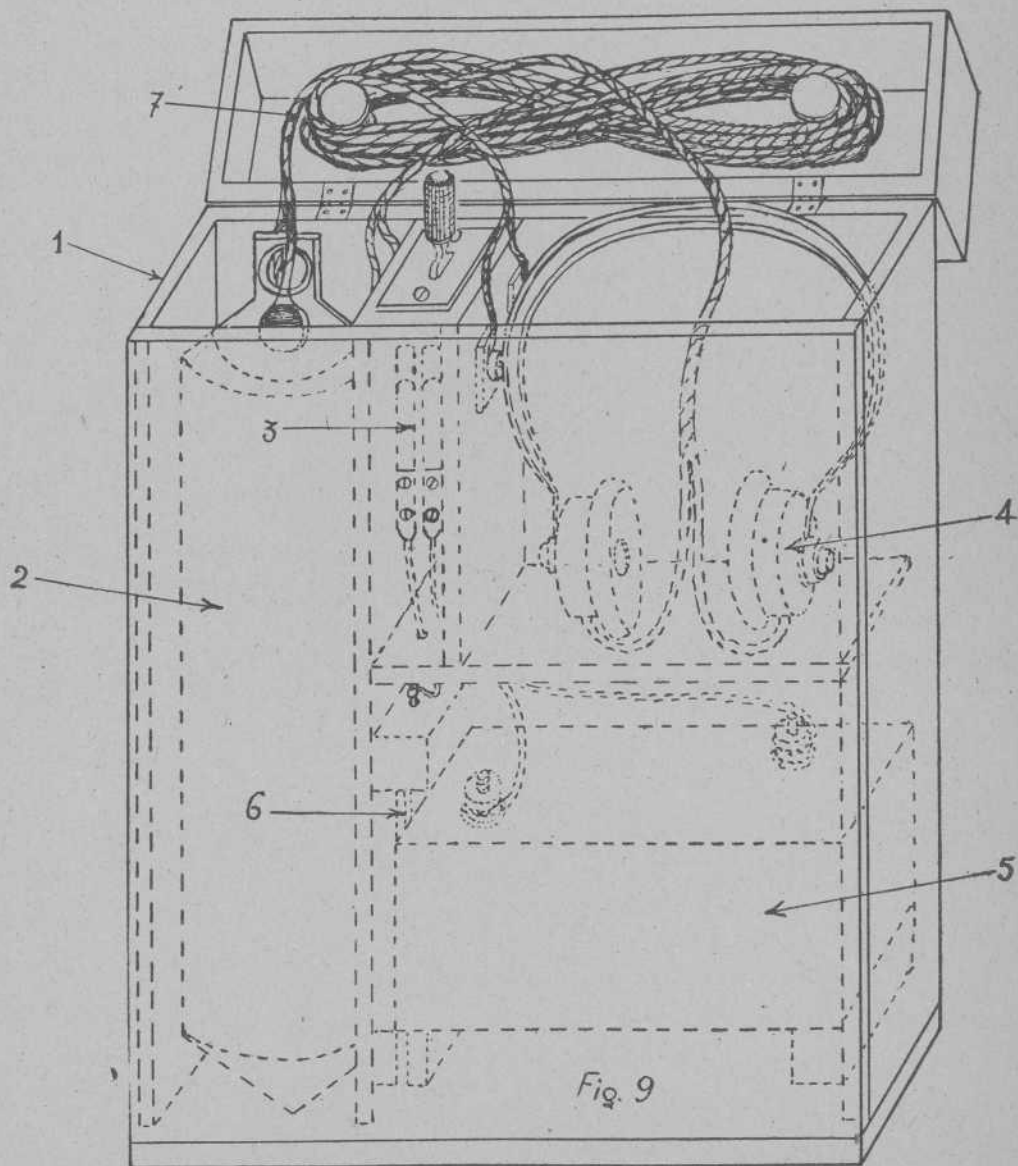


Tabla. VI

firmomicrofono de pendulo



1. Estuche. — 2. Revelador. — 3. Interruptor. — 4. Auriculares. — 5. Pilas. — 6. Condensador. — 7. Hilos conductores

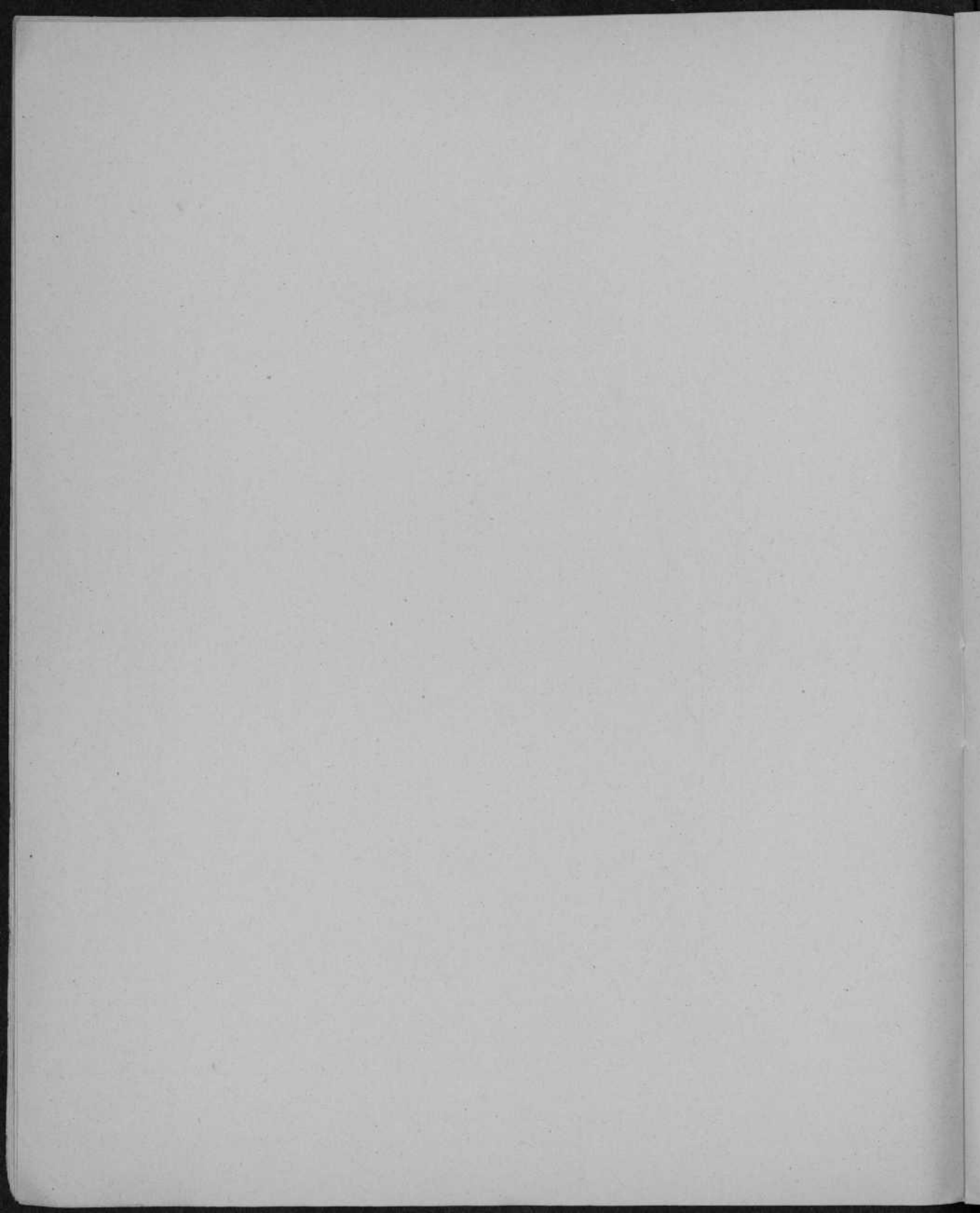


Tabla. VII

Sismomicrofono de péndulo

Revelador
sección longitudinal

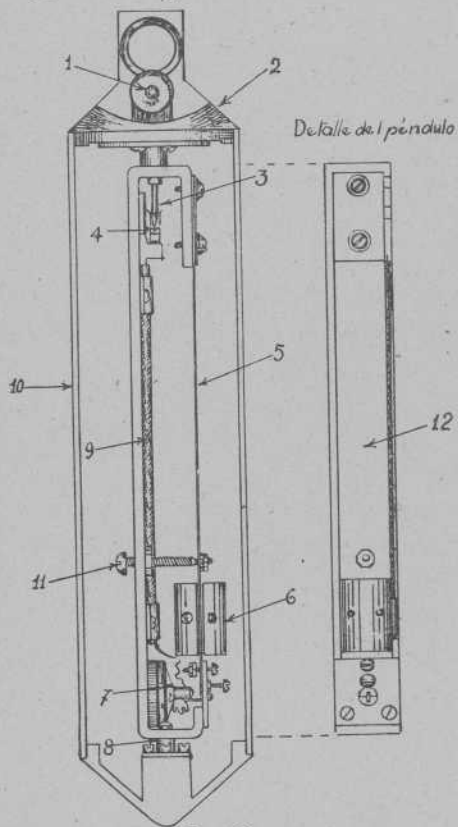


Fig. 10

- 1 Reforzos
- 2 Tapón del estuche cilíndrico
- 3 Pivote de contacto
- 4 Láminas de contacto
- 5 Lámina elástica
- 6 Péndulo
- 7 Capsula microfónica
- 8 Perno de suspensión
- 9 Cable conductor
- 10 Estuche cilíndrico
- 11 Tornillo regulador
- 12 Detalle del péndulo

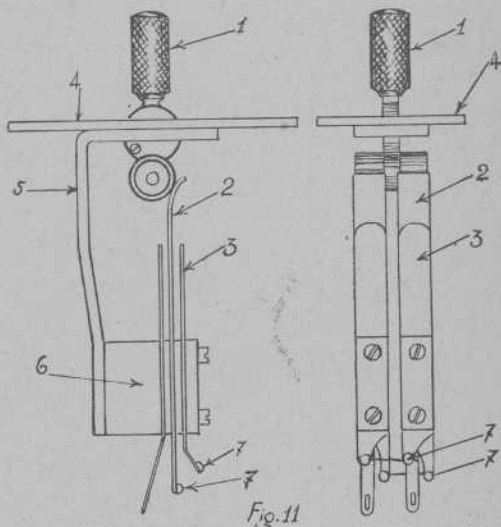
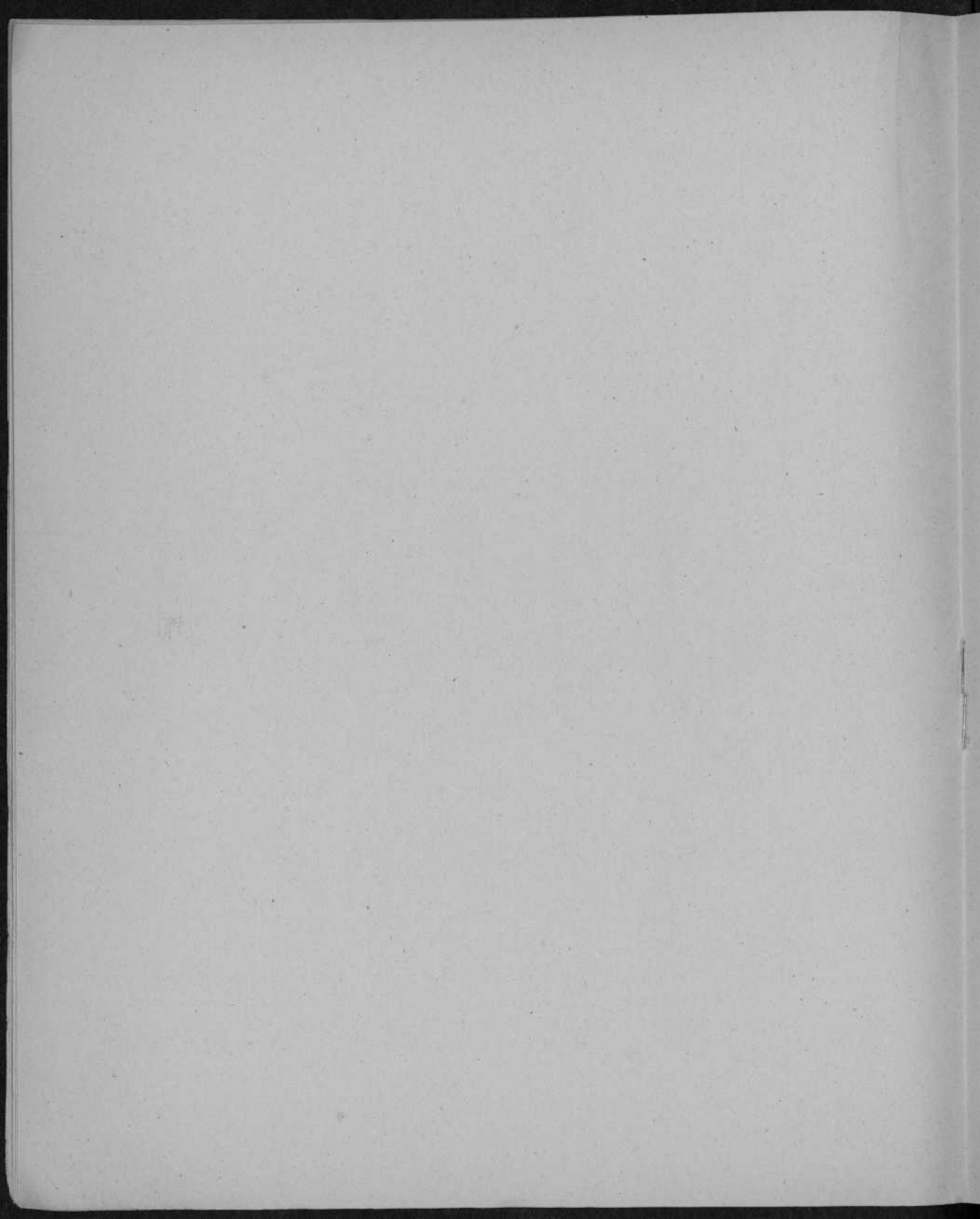


Fig. 11

Detalle del interruptor de palanca

- 1 Pomo de interruptor
- 2 Láminas móviles
- 3 Láminas fijas
- 4 Base de bakelita
- 5 Toposte de las láminas
- 6 Masa aislante
- 7 Puntos de conexión de los conductores



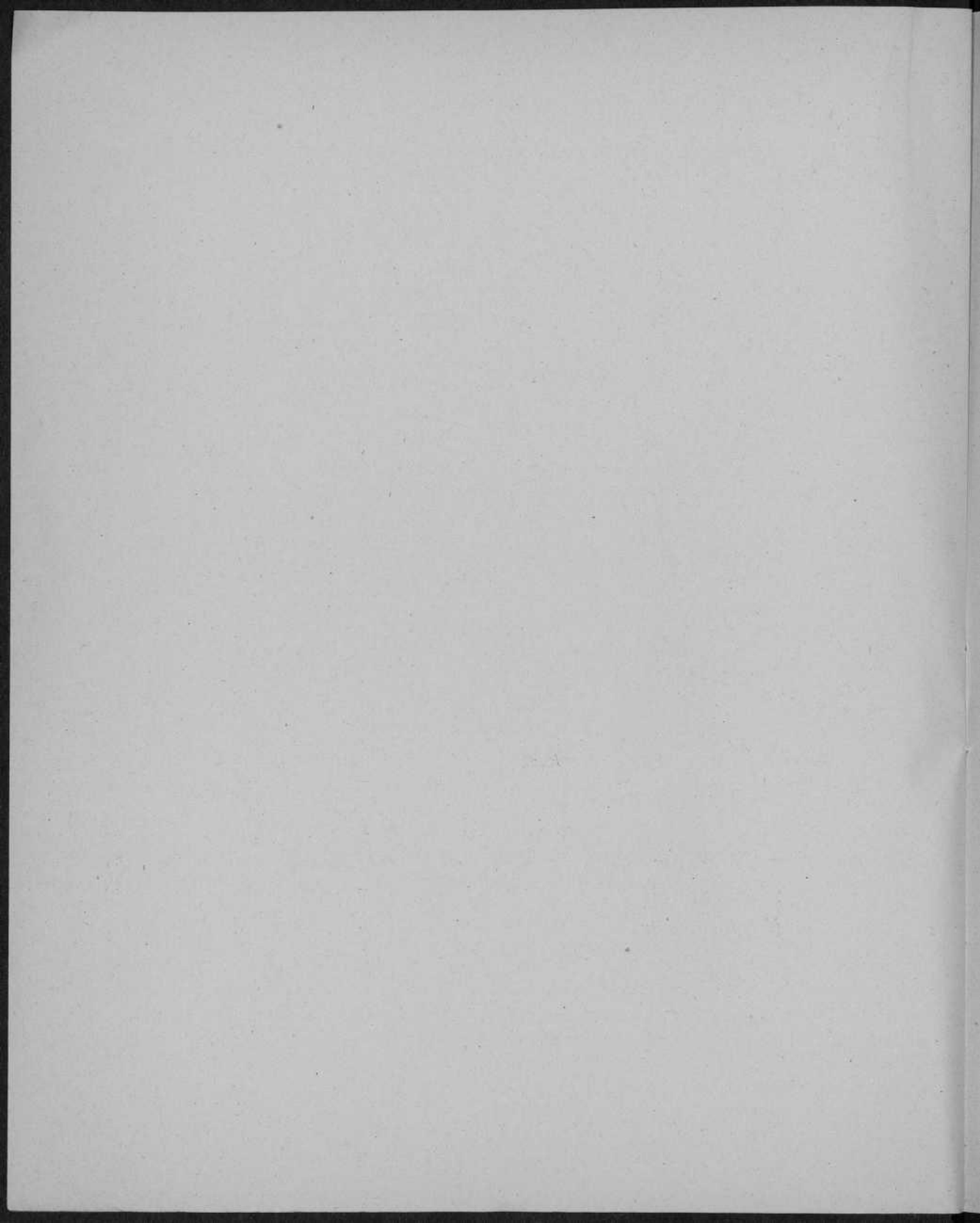


Tabla. IX

Sismomicrofono mod. 32

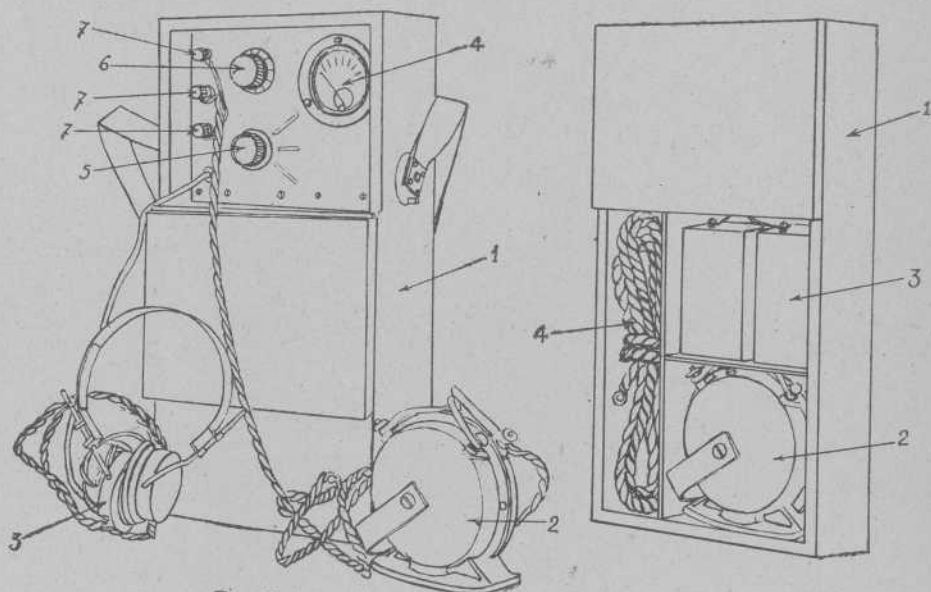


Fig. 13

Fig. 14

- 1 Estuche
- 2 Revelador
- 3 Auriculares
- 4 Mileamperímetro
- 5 Interruptor
- 6 Potenciómetro de anillo
- 7 Bornes

- 1 Estuche
- 2 Revelador
- 3 Pilas
- 4 Conductor de tres cables

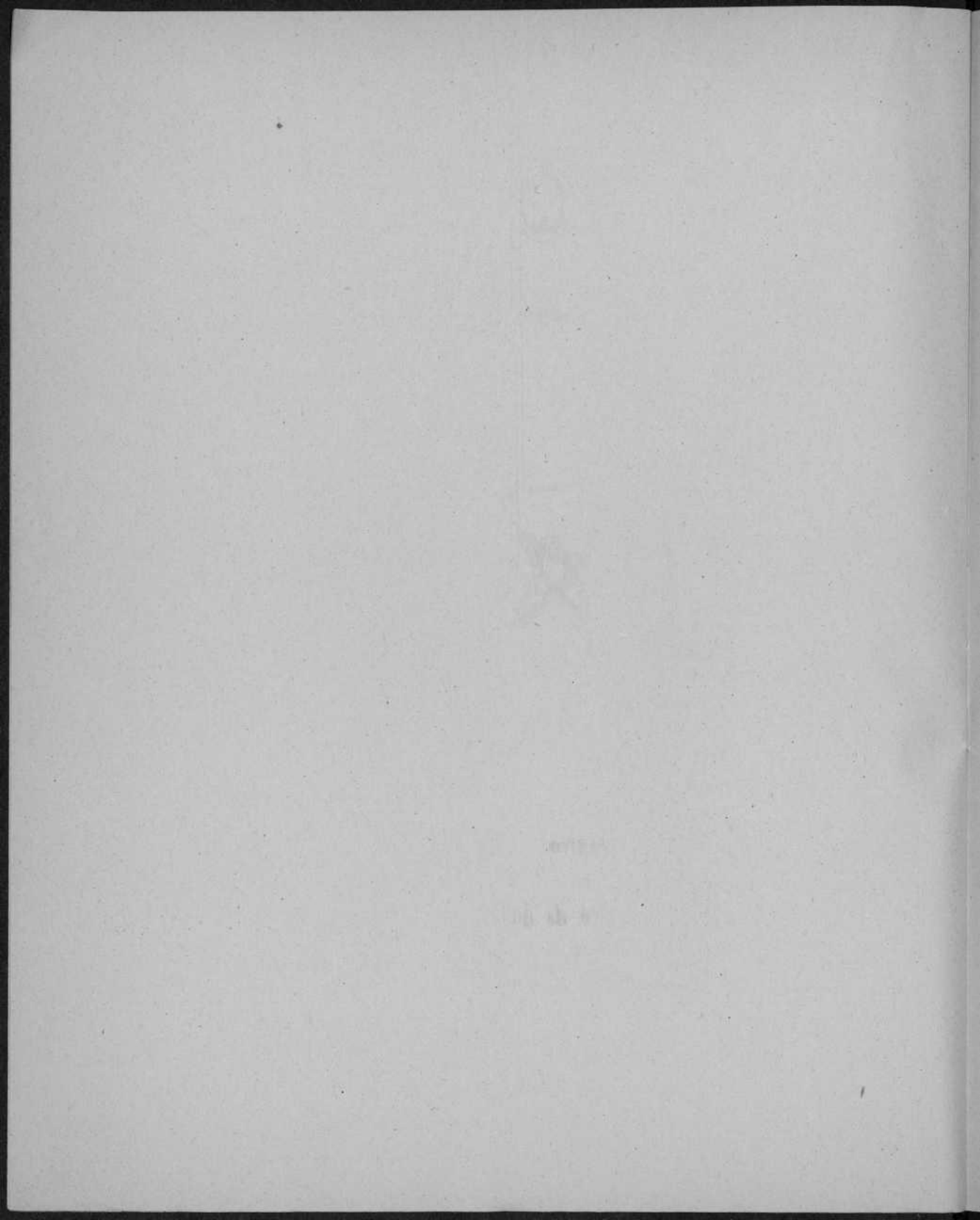


Tabla X

Sismomicrofófono mod. 32
Detalle del revelador

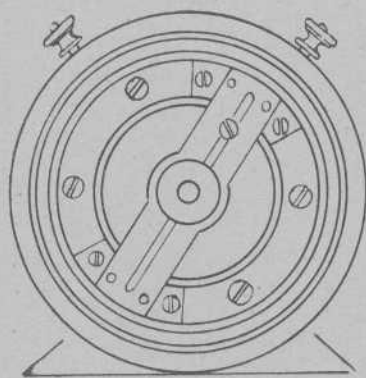


Fig. 15

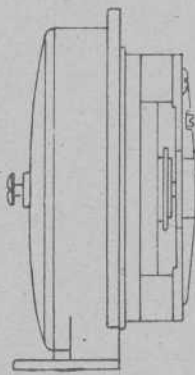


Fig. 16

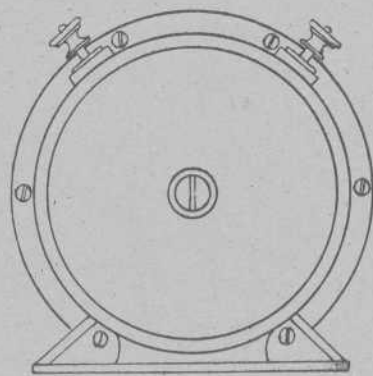


Fig. 17

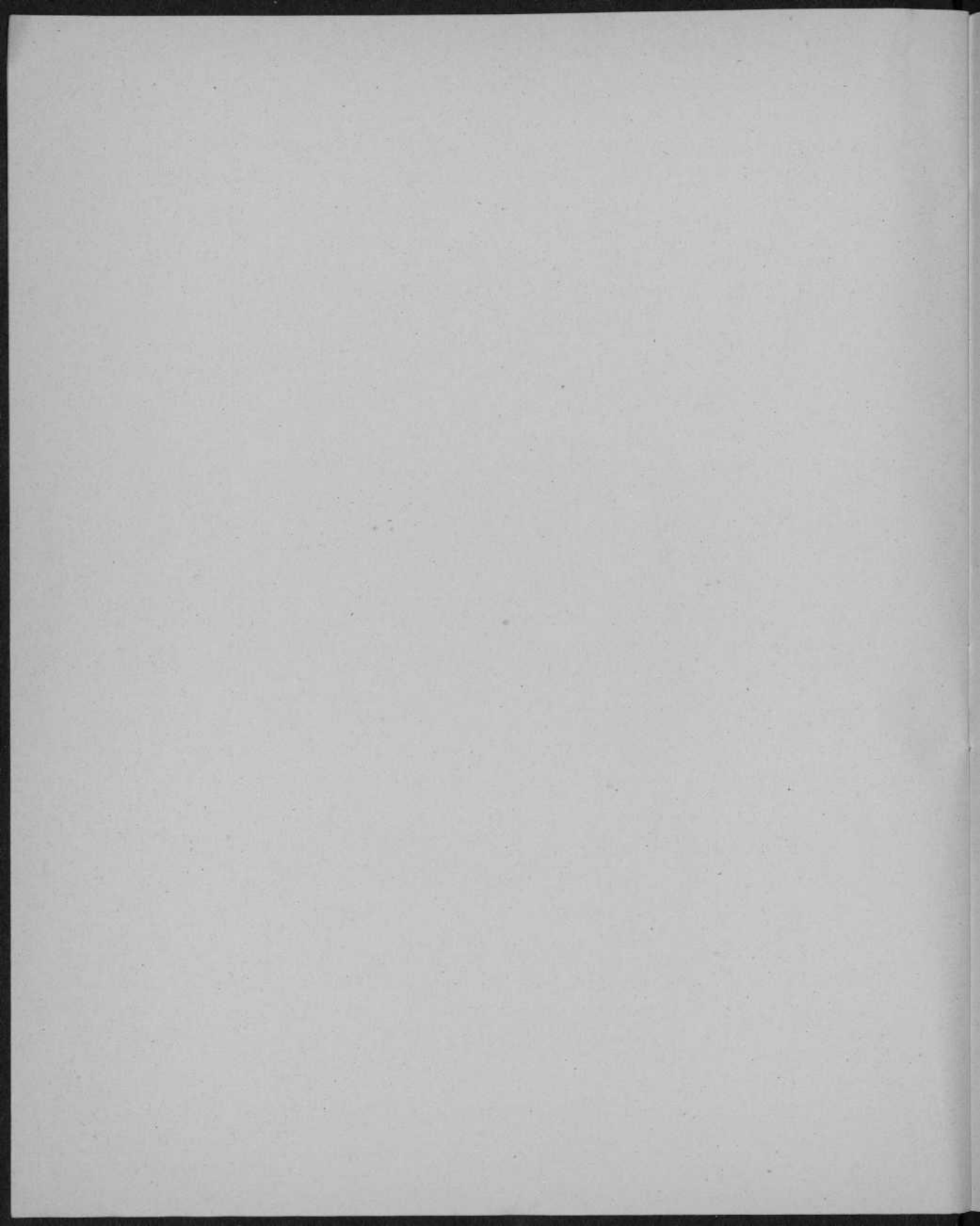


Tabla XI Sismomicrofono. mod. 32.
Esquema eléctrico

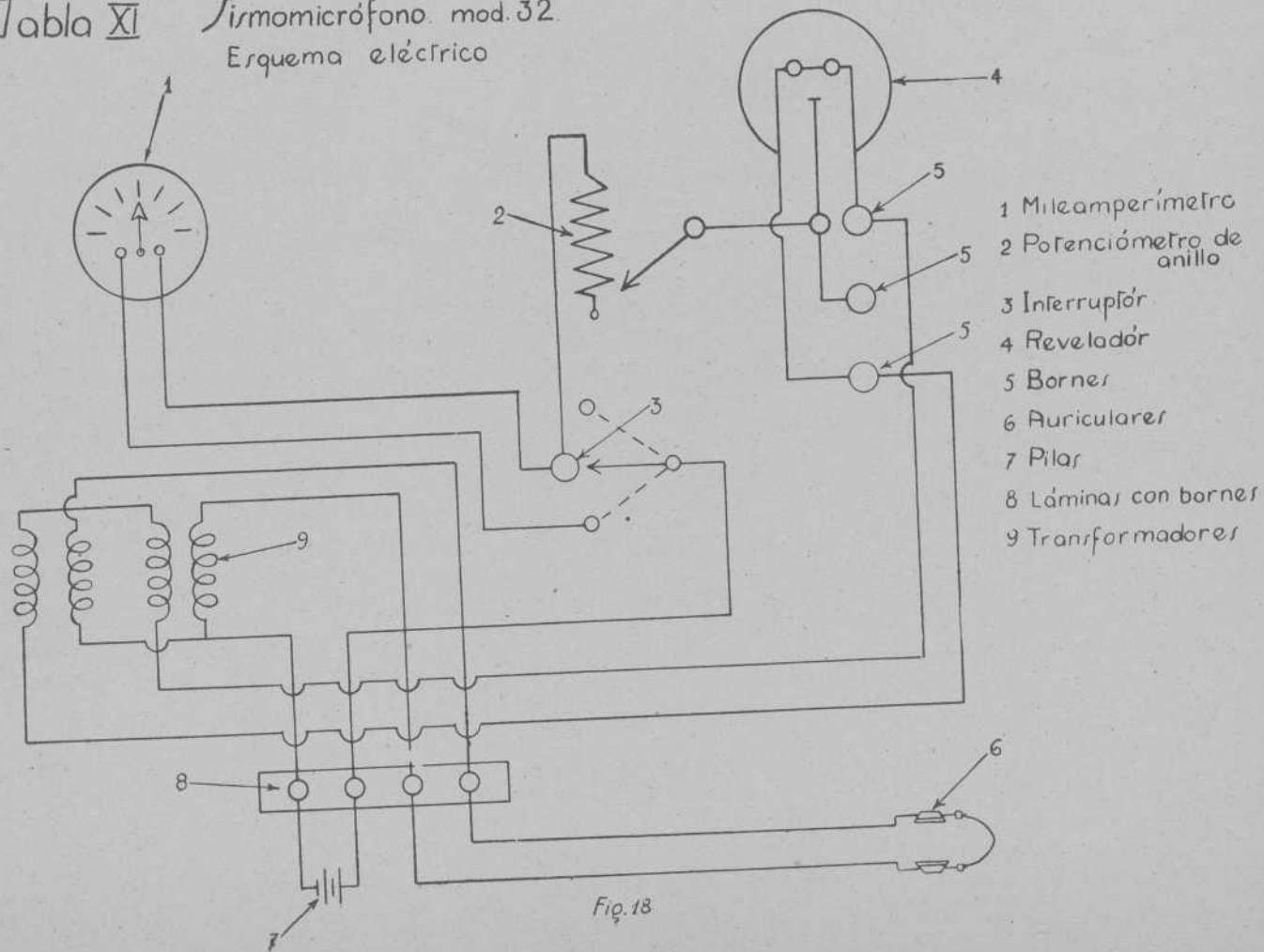


Fig. 18

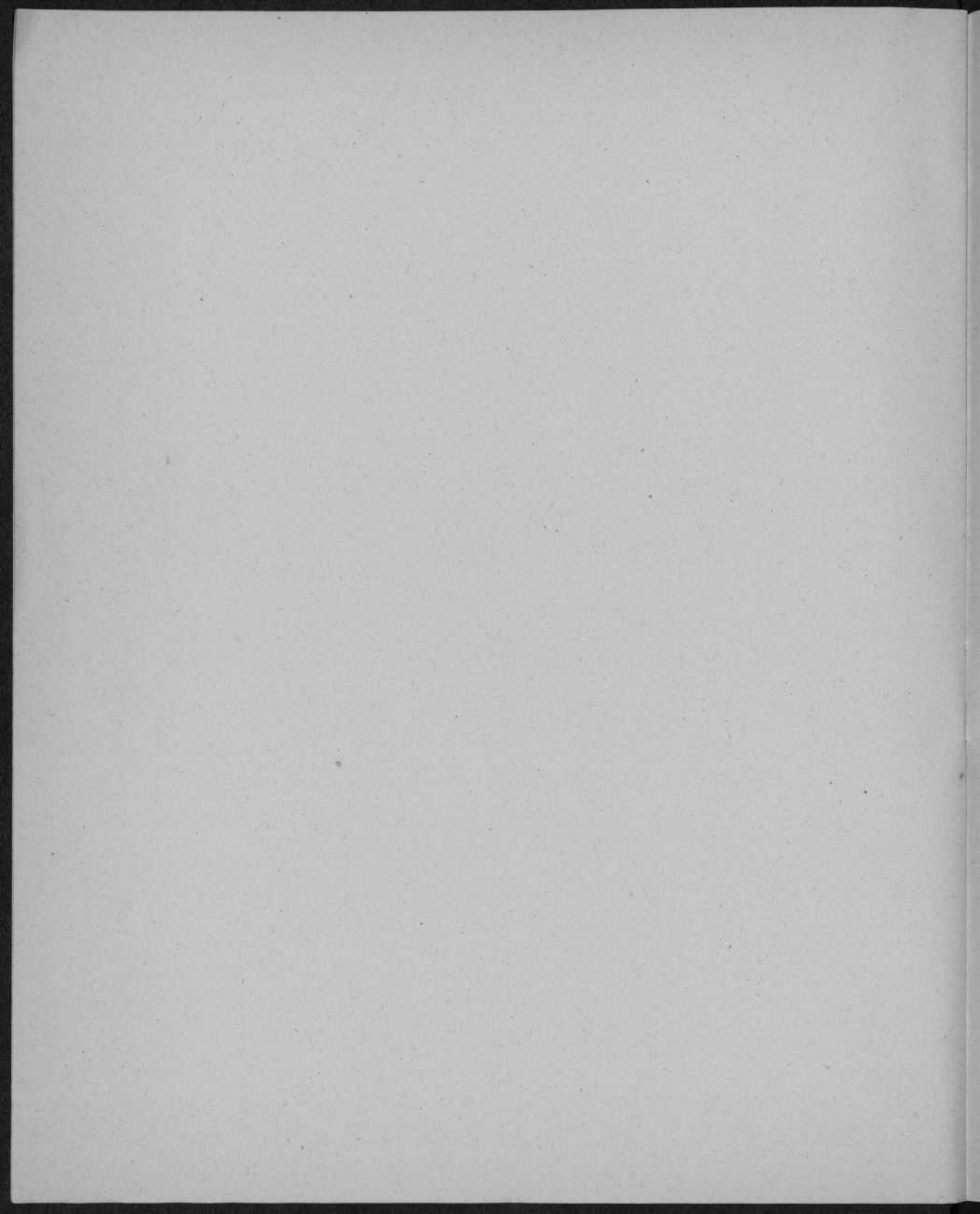
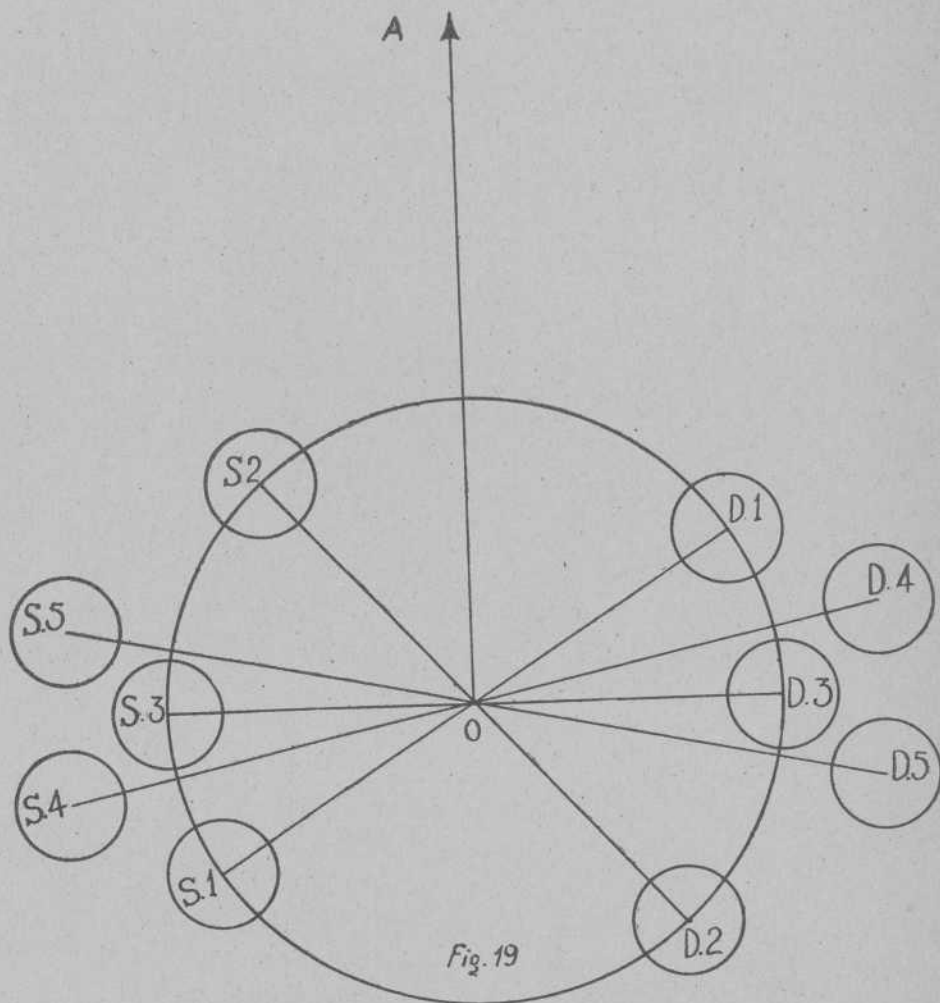


Tabla. XII



Procedimiento de escucha en varias direcciones con el geófono.

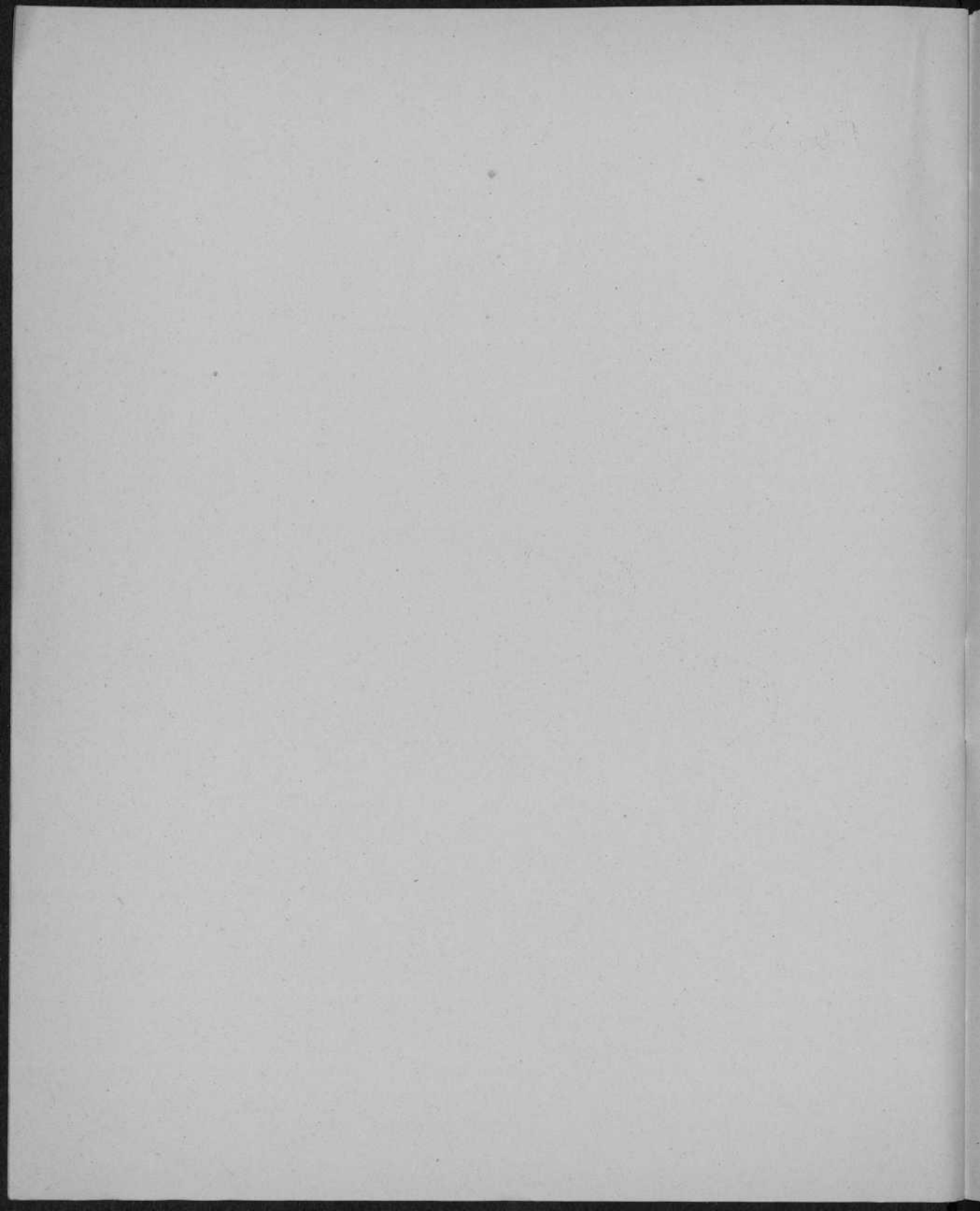
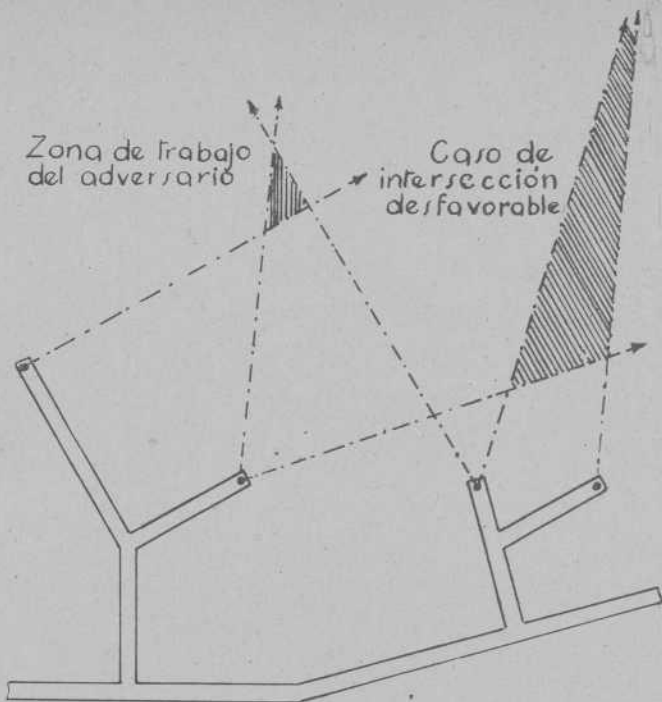


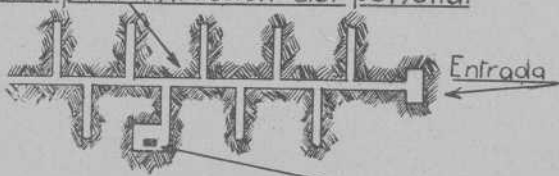
Tabla XIII



Determinación topográfica en la escucha subterránea



Galería para instrucción del personal



Posible estación central de escucha

Sistema de galería para instrucción a la escucha subterránea

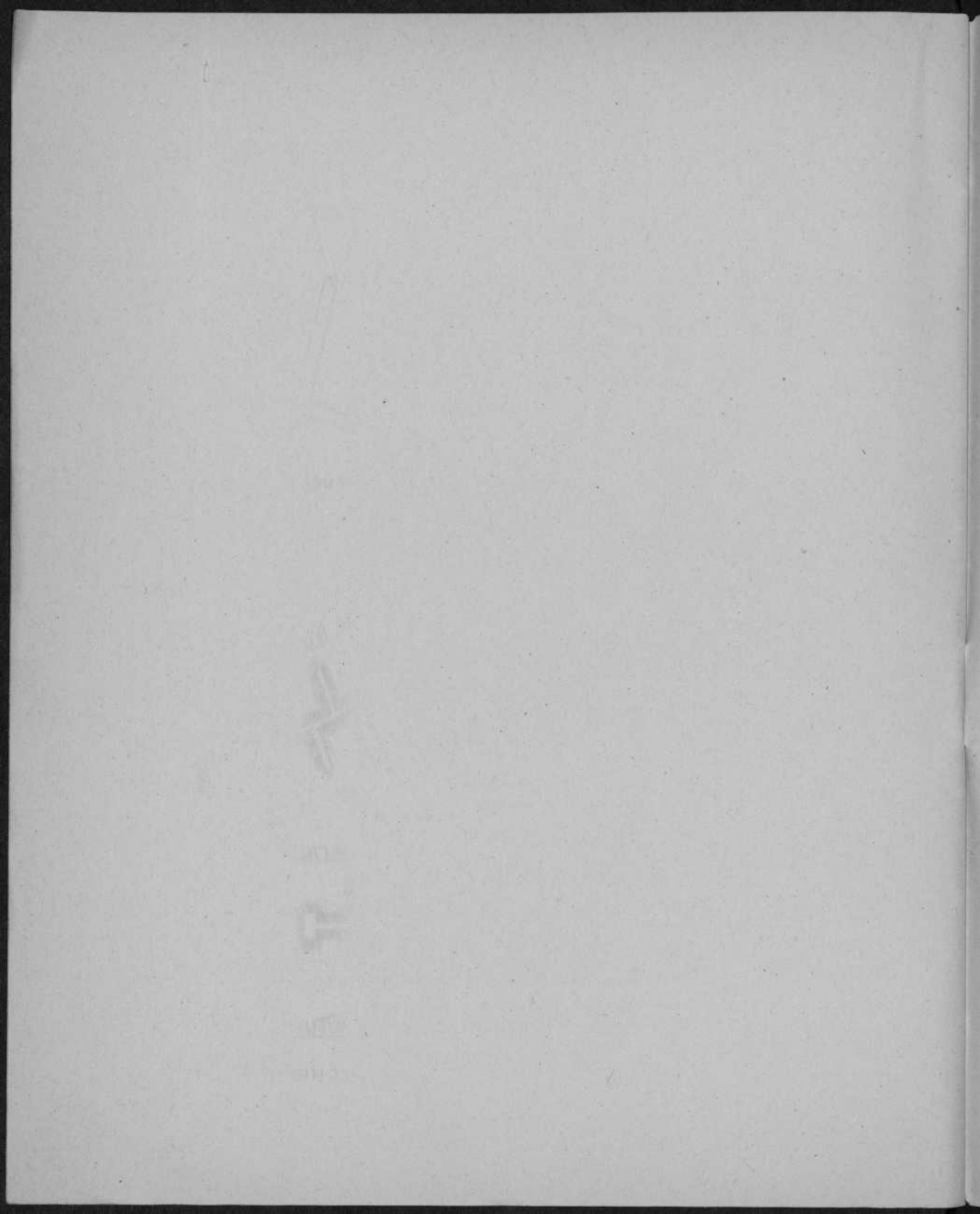
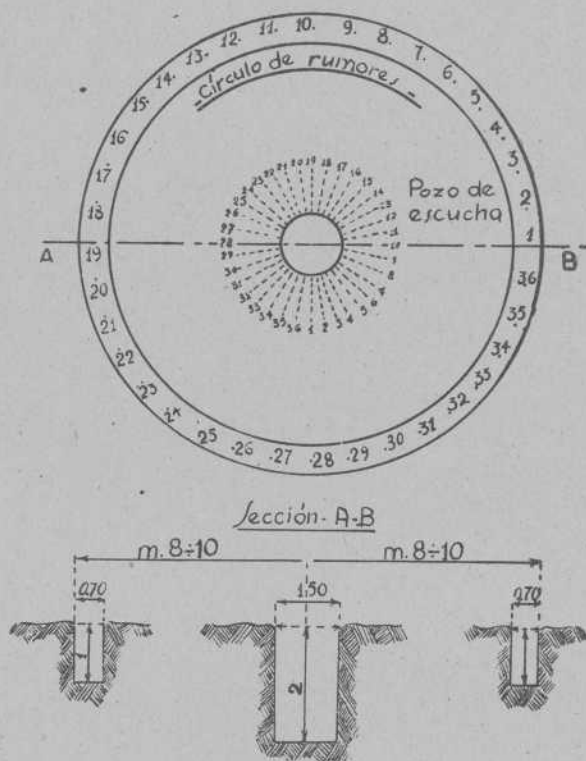


Tabla XIV



Círculo de escucha para el adiestramiento del personal a la escucha subterránea.



