

**Instituto General y Técnico  
de Burgos**

**Curso de 1914-1915**









IMPRIMERIE PHOTOTYPIQUE  
S. SLOUTCHANSKY & FILS  
27, Rue du Château-d'Eau, 27  
PARIS (FRANCE)

+ 1811936









Fachada principal del Edificio

IMPRIMERIE PHOTOTYPIQUE S. SLOUTCHANSKY ET FILS  
27, Rue du Château-d'Eau, PARIS (FRANCE)





Senor Director del Instituto, Dr. D. Tomas Alonso de Armino y Calleja





Senores Profesores del Establecimiento

IMPRIMERIE PHOTOTYPIQUE S. SLOUTCHANSKY ET FILS  
27, Rue du Château-d'Eau, PARIS (FRANCE)





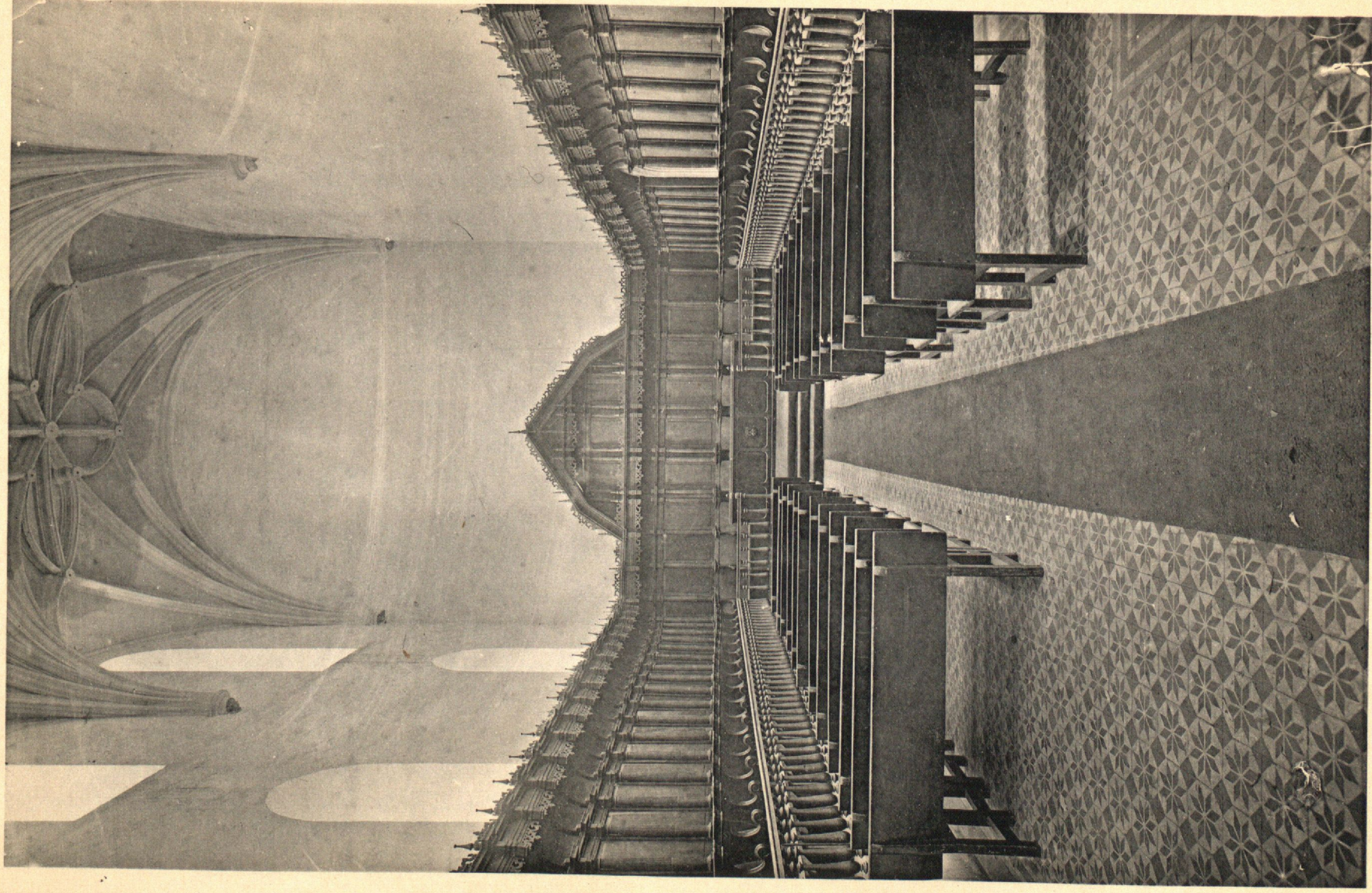
Despacho del Sr. Director





Alumnos del 5° y 6° ano





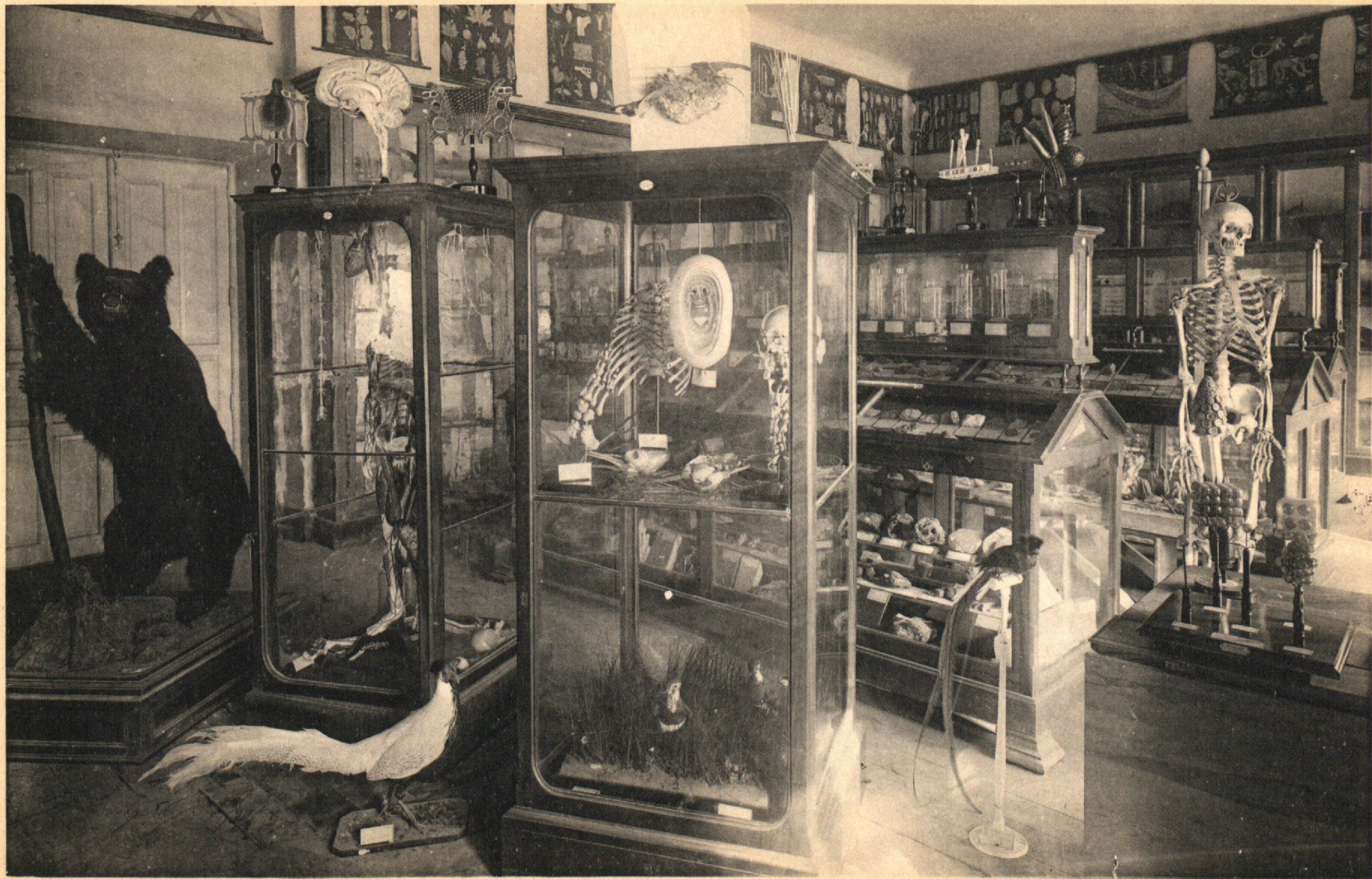
Salon de Actos





Alumnos del 4º ano





Gabinete de Historia Natural





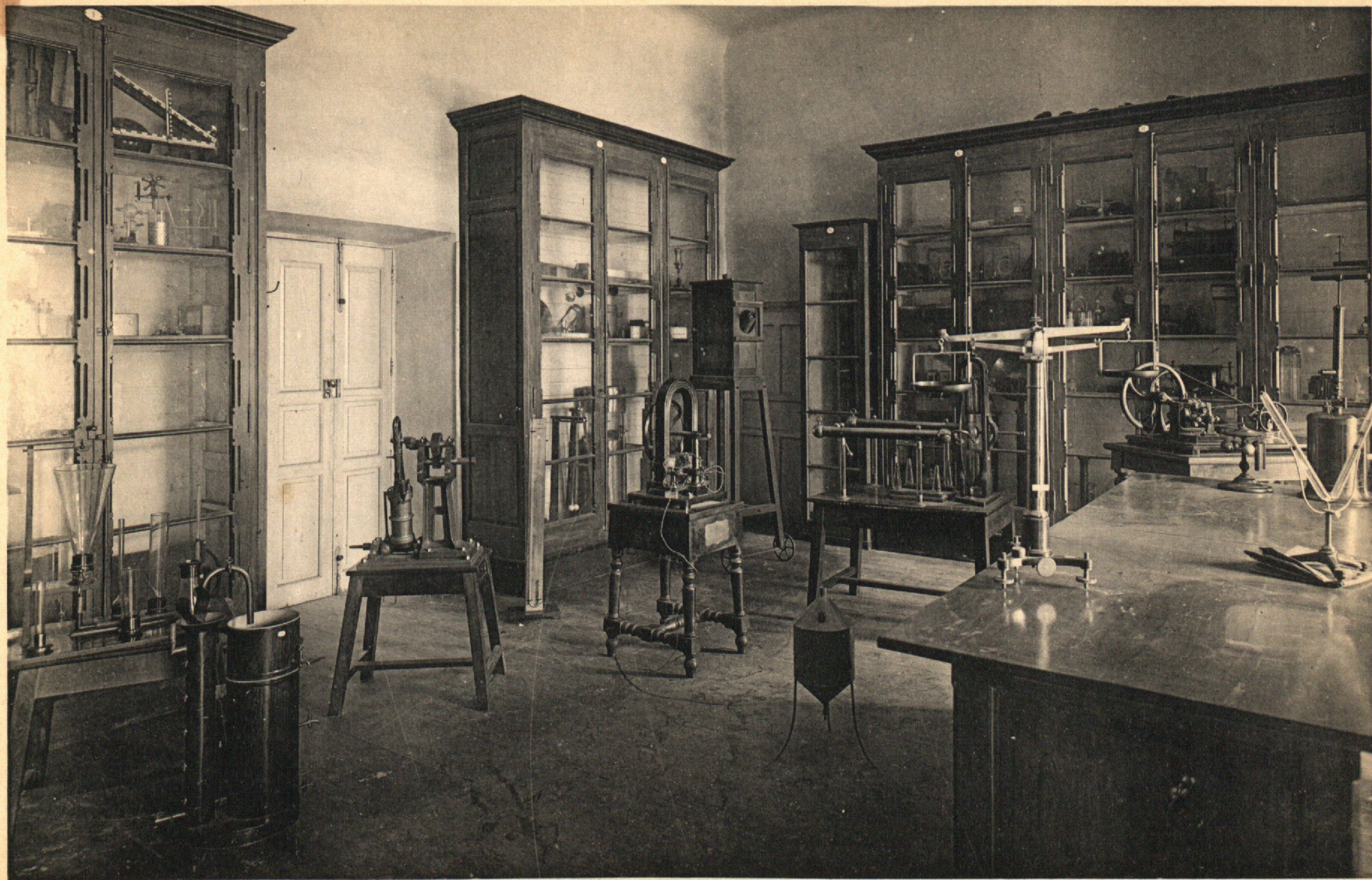
Laboratorio de Historia Natural, catedratico Dr. D. Jose Lopez de Zuazo





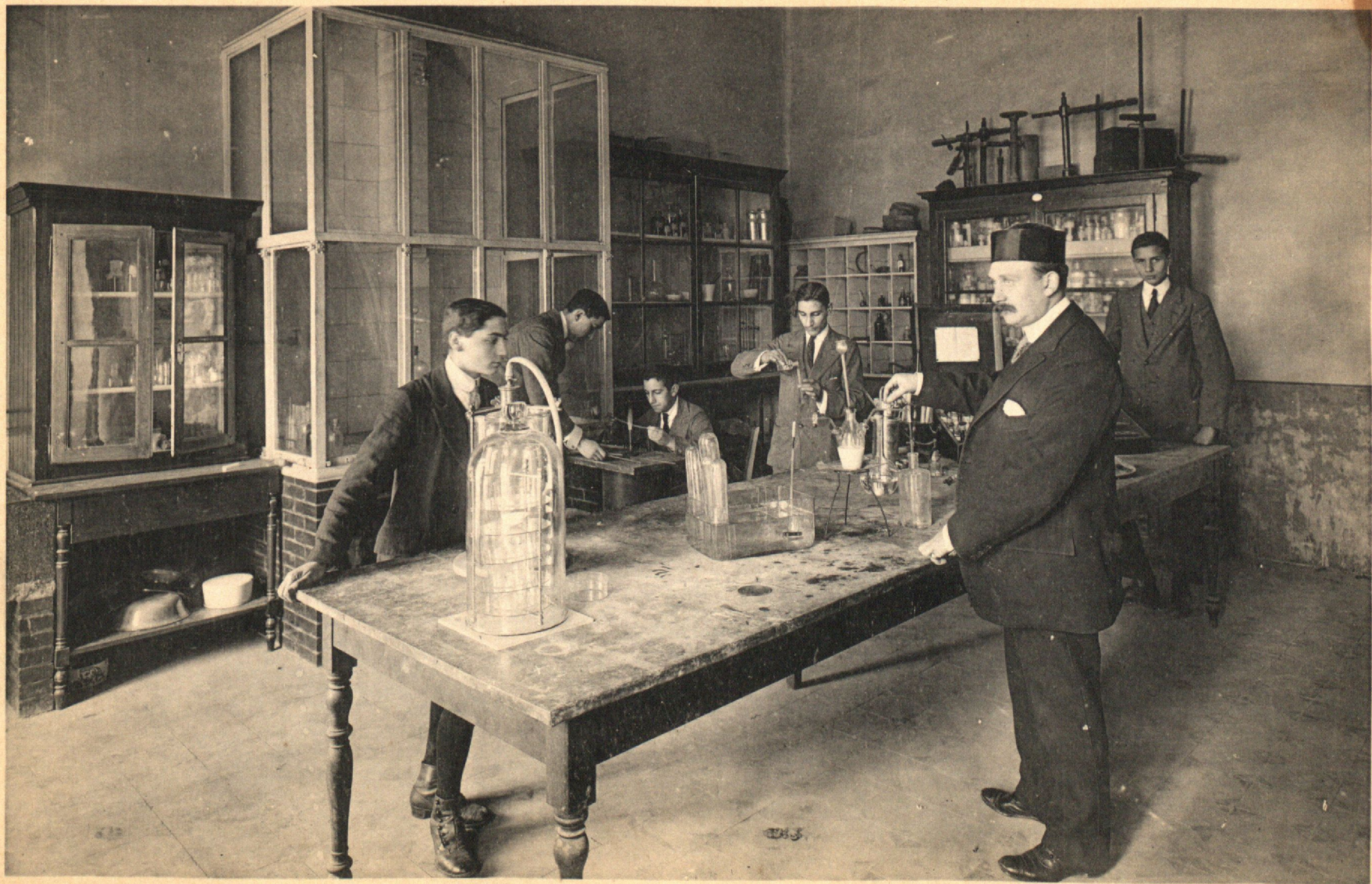
Alumnos de 3<sup>er</sup> ano





Gabinete de Física





Laboratorio de Química, catedrático D. Candido Aguilar





Alumnos de 2º ano (grupo A)

IMPRIMERIE PHOTOTYPIQUE S. SLOUTCHANSKY ET FILS  
27, Rue du Château-d'Eau, PARIS (FRANCE)





Alumnos de 2° ano (grupo B)





Gabinete de Agricultura





Alumnos de 1<sup>er</sup> ano (grupo A)





Alumnos de 1<sup>er</sup> ano (grupo B)

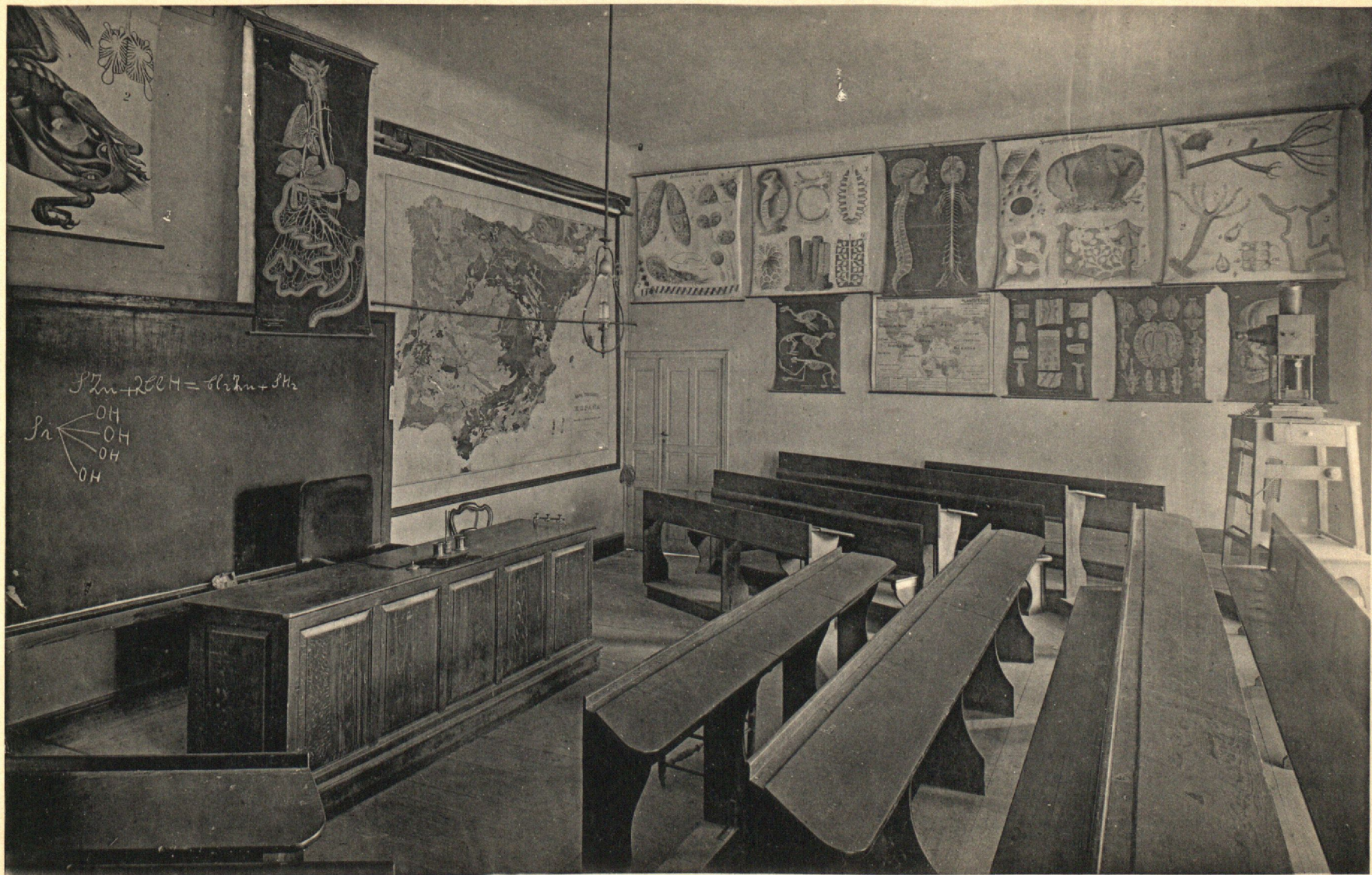
IMPRIMERIE PHOTOTYPIQUE S. SLOUTCHANSKY ET FILS  
27, Rue du Château-d'Eau, PARIS (FRANCE)





Biblioteca





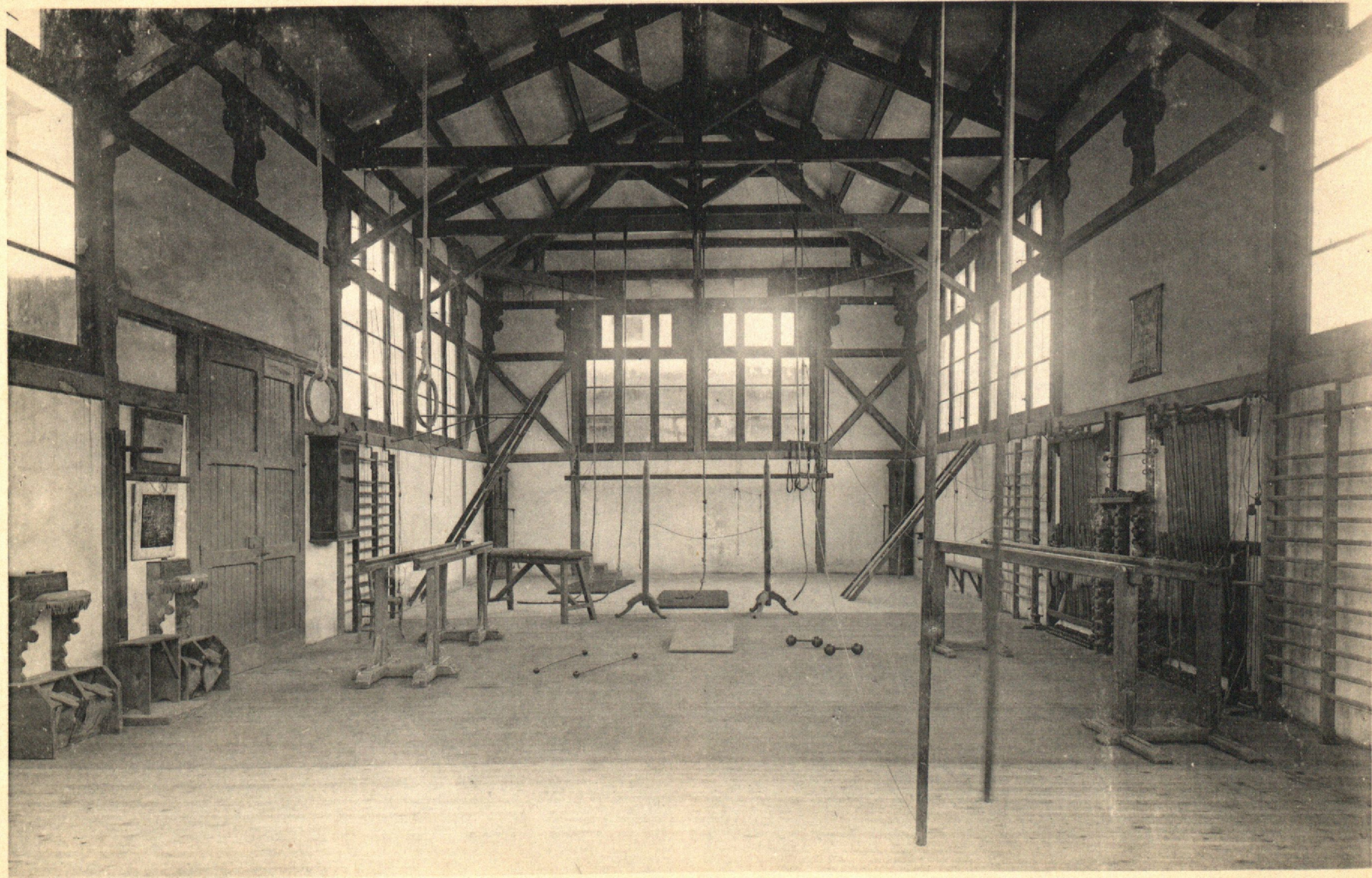
Catedra N° 5





Clase de Dibujo





Gimnasio

IMPRIMERIE PHOTOTYPIQUE S. SLOUTCHANSKY ET FILS  
27, Rue du Château-d'Eau, PARIS (FRANCE)





Detalle de la Fachada principal



Tribuna del Salon de Actos





Observatorio Meteorologico





Jardin Botanico



3

8

PRINTED BY THE UNIVERSITY PRESS, CAMBRIDGE



3

6

PERMITS TO COPY

FOR THE PUBLIC







IMPRIMERIE PHOTOTYPIQUE  
S. SLOUTCHANSKY & FILS  
27, Rue du Château-d'Eau, 27  
PARIS (FRANCE)





DANIEL SMITH

12327