

Violin II

Pedro Reguilla

4 Couplet

para

Dextro

Margarita Pacheco

Pen y Pen

Musical staff with treble clef, key signature of one sharp (F#), and 4/4 time signature. It contains a series of chords and notes.

Musical staff with a series of chords and notes, including a repeat sign.

Musical staff with a series of chords and notes, including a repeat sign.

Musical staff with a series of chords and notes, including a repeat sign.

Musical staff with a series of chords and notes, including a repeat sign.

Musical staff with a series of chords and notes, including a repeat sign.

Musical staff with a series of chords and notes, including a repeat sign.

*Two*  
Coda

Musical staff with a series of chords and notes, including a repeat sign.

Musical staff with a series of chords and notes, including a repeat sign.

# No. 2. La Reina del Cortijo

Alto

The first staff of music is written in treble clef with a key signature of one sharp (F#) and a 2/4 time signature. It begins with a double bar line and a repeat sign. The notation consists of a series of eighth and sixteenth notes, some beamed together, and rests.

*despacio*

The second staff continues the melody. It features a double bar line and a repeat sign. The tempo marking *despacio* is written above the staff. The notation includes eighth and sixteenth notes, some with slurs.

The third staff continues the melody with eighth and sixteenth notes, some beamed together, and rests.

The fourth staff continues the melody with eighth and sixteenth notes, some beamed together, and rests.

The fifth staff continues the melody with eighth and sixteenth notes, some beamed together, and rests.

The sixth staff continues the melody with eighth and sixteenth notes, some beamed together, and rests.

The seventh staff continues the melody with eighth and sixteenth notes, some beamed together, and rests.

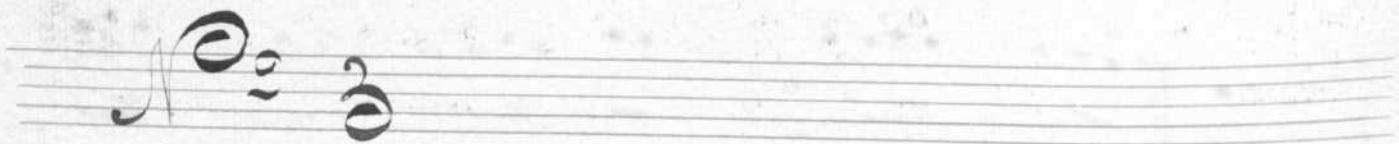
The eighth staff continues the melody with eighth and sixteenth notes, some beamed together, and rests.

Coda

The Coda section is marked with the word 'Coda' in a large, decorative script. It consists of a double bar line followed by a few notes and rests.

Three empty musical staves are located at the bottom of the page.





# Maria Mari!

*Muy Cantando*

*And<sup>no</sup>*

*f*

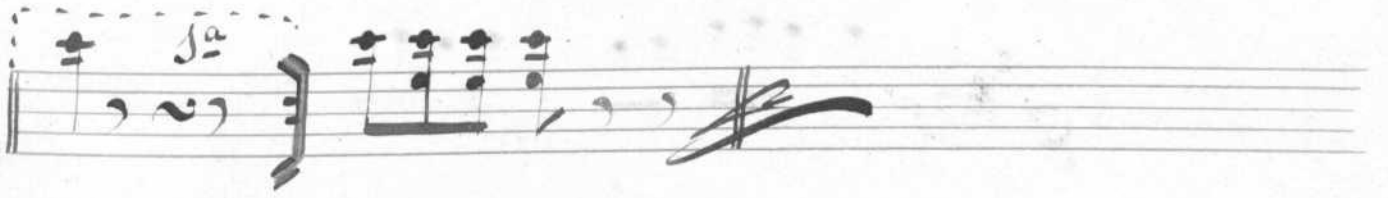
*p*

*mf*

*cres*

*p*

*mf*



# No. 4 El Loro

Handwritten musical score for 'El Loro', No. 4. The score is written on ten staves. The first staff contains the title 'No. 4 El Loro'. The second staff begins with the tempo marking 'Alto' and the time signature '4/4' with a sharp sign indicating the key signature. The music is written in a single system, featuring a variety of rhythmic values, including eighth and sixteenth notes, and rests. The notation includes slurs, ties, and dynamic markings such as '+' and 'p'. The piece concludes with a double bar line and repeat dots at the end of the tenth staff.

à la Signe

Ja